

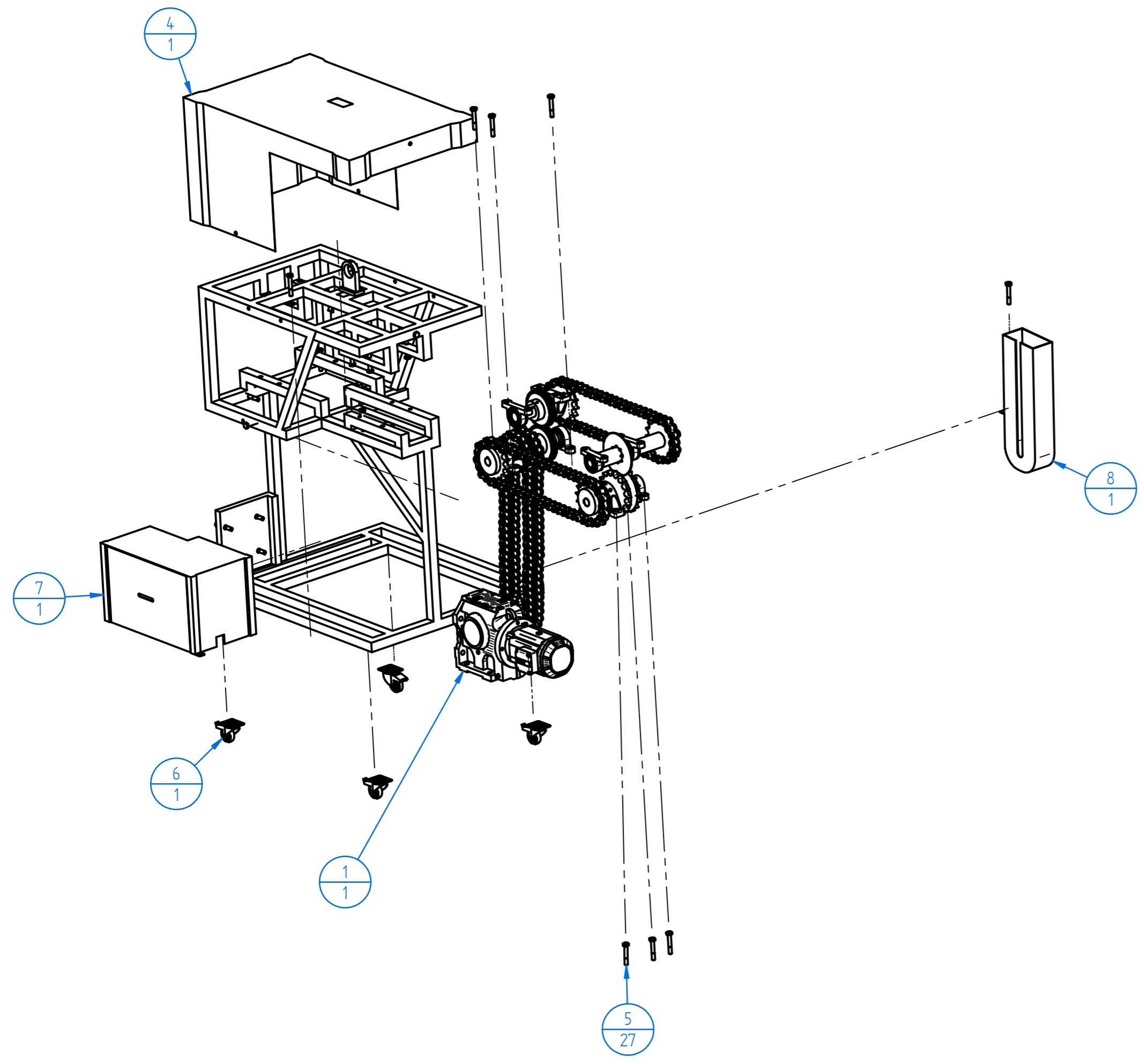
A

B


C

D

E



Número de elemento	Nombre archivo (sin extensión)	Cantidad
1	ensamble mecanismo	1
2	estructura dos	1
3	estructura 1	1
4	chaqueta	1
5	perno_iso_7411-m16x100-10_9	27
6	estructura movil	1
7	chaqueta motor	1
8	chaqueta codena	1

PERMISSIBLE DEVIATION - ISO 2768 - m					 Universidad de América <small>1600-300-010</small>				FACULTY: INGENIERIAS	
mm	fine (f)	medium (m)	coarse (c)	very coarse (v)					INGENIERIA MECANICA	
Over 0,5 up to 3	±0,05	±0,1	±0,2	-					INGENIERIA MECANICA	
Over 3 up to 6	±0,05	±0,1	±0,3	±0,5	FLJA	DRAWN BY	CHECKED BY	APPROVED BY	COURSE: TRABAJO DE GRADO	
Over 6 up to 30	±0,1	±0,2	±0,5	±1	NAME	OFID MURCIA	EDGAR CHALA	EDGAR CHALA	REMOVE SHARP EDGES AND BURRS	
Over 30 up to 120	±0,15	±0,3	±0,8	±1,15	DATE				DO NOT MEASURE ON THE DRAWING	
Over 120 up to 400	±0,2	±0,5	±1,2	±2,5	SIGN				ISO A	
Over 400 up to 1000	±0,3	±0,8	±2	±4	TREATMENT				EXPLODED VIEW	
Over 1000 up to 2000	±0,5	±1,2	±3	±6	SCALE: 1:20	DIMENSIONS IN: mm		DESCRIPTION: Explosionado Estructura		PLAN CODE:
Over 2000 up to 4000	-	±2	±4	±8	QUANTITY: 1	SHEET NO.: 1	TOTAL SHEETS: 14			

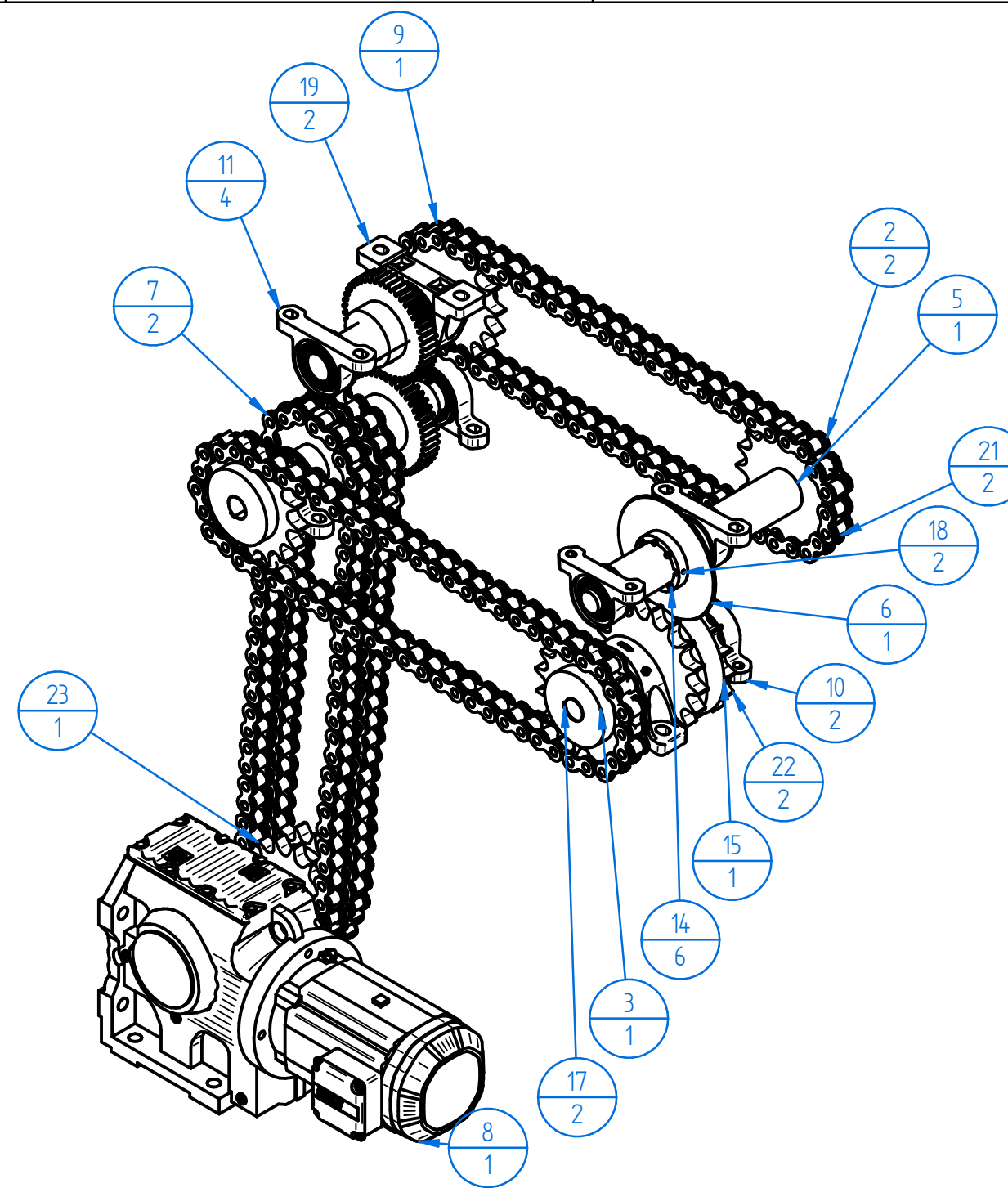
SOLID EDGE ACADEMIC COPY

A

B

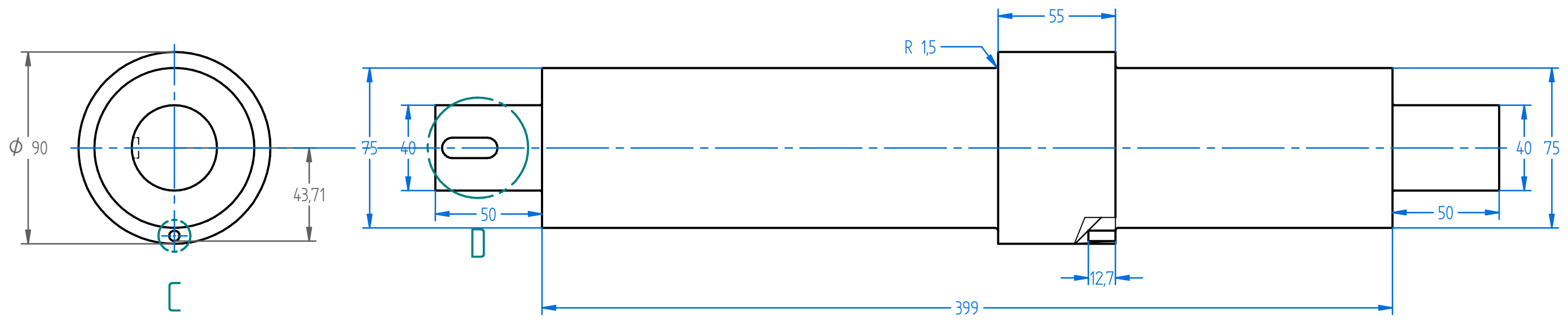
C

Número de elemento	Nombre archivo (sin extensión)	Cantidad
1*	ensamble mecanismo 1	1
2	CADENA UNION	2
3	eje dos	1
4*	CATALINA contacto de llantas	2
5	eje uno	1
6	CUCHILLA FINAL	1
7	cadena union dos	2
8	ROTO MOTOR	1
9	ensamble mecanismo 1	1
10	chumacera de 40	2
11	chumacera de 50	4
12*	cuña de 60	1
13*	pricioneros 1.4	2
14	tornillo de cuchilla	6
15	roldana	1
16*	tornillo de roldana	3
17	cuña de 40 mm	2
18	pricionero 3.16	2
19	SKF_P2B 60M-TR	2
20*	cuña cuchilla	1
21	catalina simple	2
22	catalina simple contacto de llanta	2
23	catalina doble eje 4	1

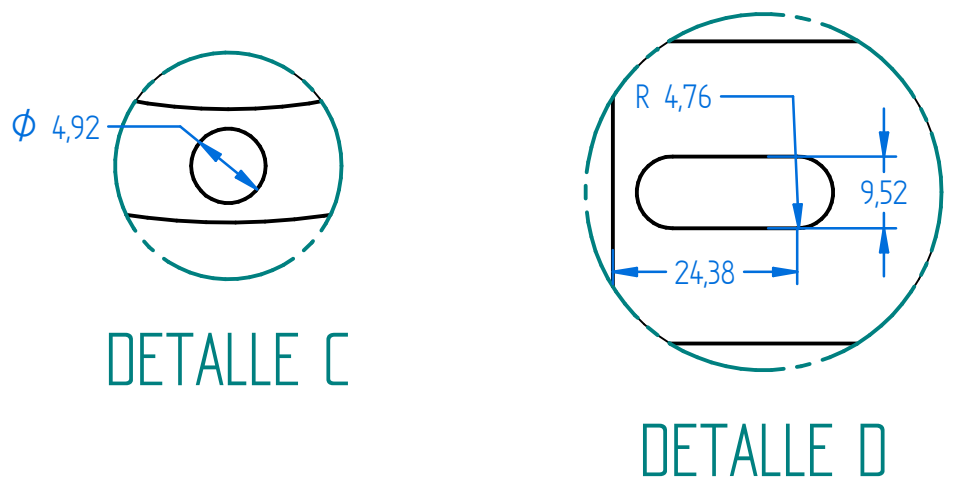


PERMISSIBLE DEVIATION - ISO 2768 - m					 UNIVERSIDAD DE AMÉRICA Código SMS 1715				FACULTY: INGENIERIAS		
mm	fine (f)	medium (m)	coarse (c)	very coarse (v)	PROGRAM: INGENIERIA MECANICA				COURSE: TRABAJO DE GRADO		
Over 0,5 up to 3	±0,05	±0,1	±0,2	-	FUJA	DRAWN BY: OFID MURCIA	CHECKED BY: EDGAR CHALA	APPROVED BY: EDGAR CHALA	REMOVE SHARP EDGES AND BURRS		
Over 3 up to 6	±0,05	±0,1	±0,3	±0,5	DATE				DO NOT MEASURE ON THE DRAWING		
Over 6 up to 30	±0,1	±0,2	±0,5	±1	SIGN				SYSTEM: ISO A		
Over 30 up to 120	±0,15	±0,3	±0,8	±1,15	MATERIAL: AISI 1045	TREATMENT:			SURFACE FINISH: 120		
Over 120 up to 400	±0,2	±0,5	±1,2	±2,5	SCALE: 2:1	DIMENSIONS IN: mm			DESCRIPTION: MECANISMO		
Over 400 up to 1000	±0,3	±0,8	±2	±4	QUANTITY: 1	SHEET NO.: 2			PLAN CODE:		
Over 1000 up to 2000	±0,5	±1,2	±3	±6	TOTAL SHEETS: 14						
Over 2000 up to 4000	-	±2	±4	±8							

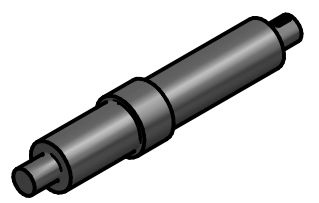
A



B

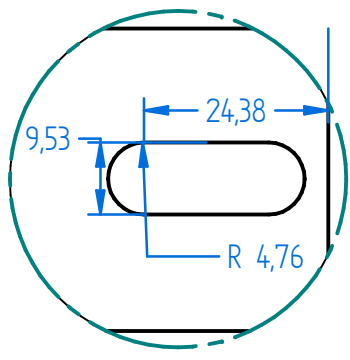
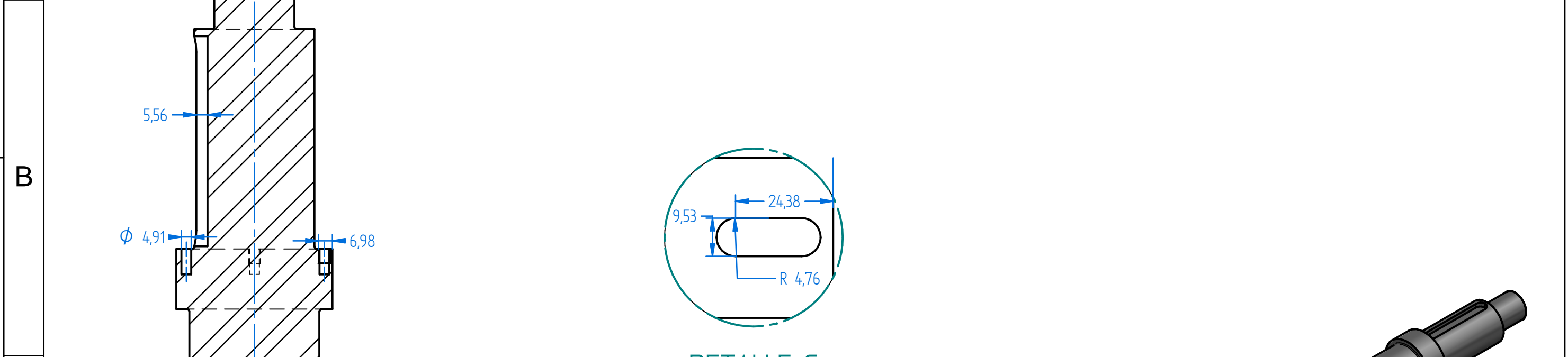
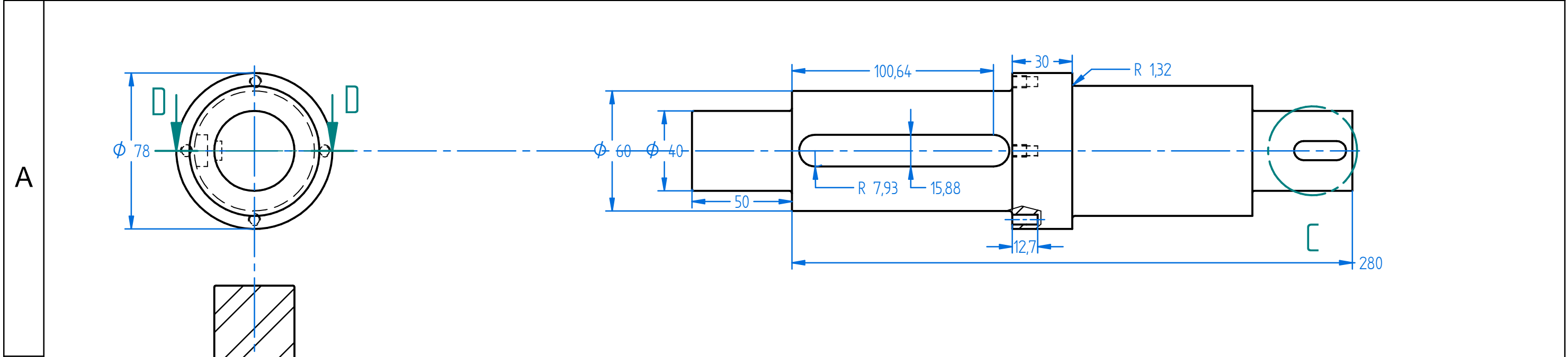


C

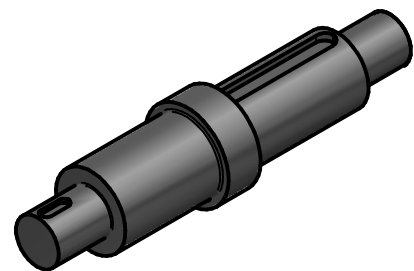


SOLID EDGE ACADEMIC COPY

PERMISSIBLE DEVIATION - ISO 2768 - m									FACULTY: INGENIERIAS		
mm	fine (f)	medium (m)	coarse (c)	very coarse (v)					PROGRAM: INGENIERIA MECANICA		
Over 0,5 up to 3	±0,05	±0,1	±0,2	-	FUA	DRAWN BY:	CHECKED BY:	APPROVED BY:	COURSE: TRABAJO DE GRADO		
Over 3 up to 6	±0,05	±0,1	±0,3	±0,5	NAME	OFID MURCIA	EDGAR CHALA	EDGAR CHALA	SYSTEM: ISO A		
Over 6 up to 30	±0,1	±0,2	±0,5	±1	DATE				REMOVE SHARP EDGES AND BURRS		
Over 30 up to 120	±0,15	±0,3	±0,8	±1,15	SIGN				DO NOT MEASURE ON THE DRAWING		
Over 120 up to 400	±0,2	±0,5	±1,2	±2,5	MATERIAL	AISI 4140		TREATMENT:	SURFACE FINISH: 200		
Over 400 up to 1000	±0,3	±0,8	±2	±4	SCALE:	1:2 mm		DESCRIPTION:	EJE 1		
Over 1000 up to 2000	±0,5	±1,2	±3	±6	QUANTITY:	1		SHEET NO.:	3		
Over 2000 up to 4000	-	±2	±4	±8	TOTAL SHEETS:	14					

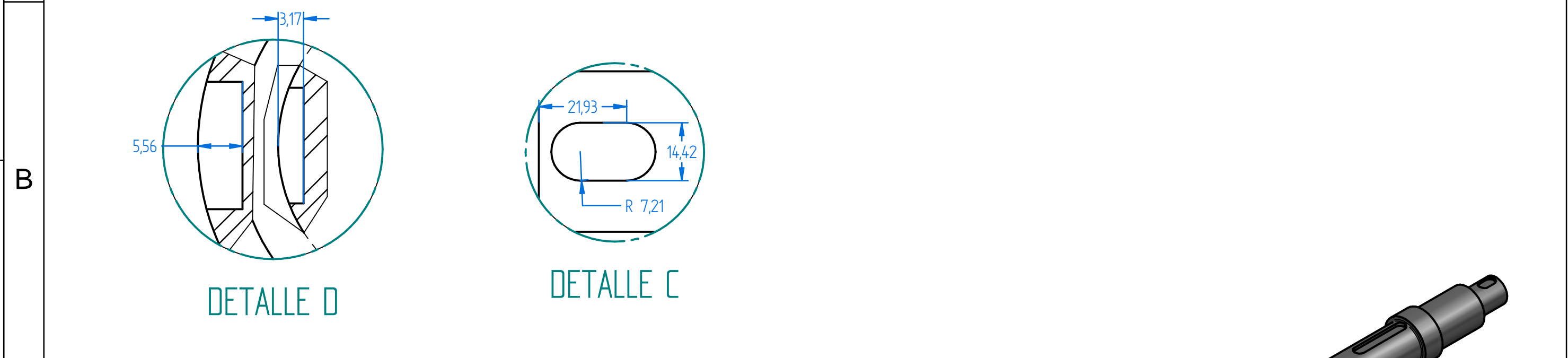
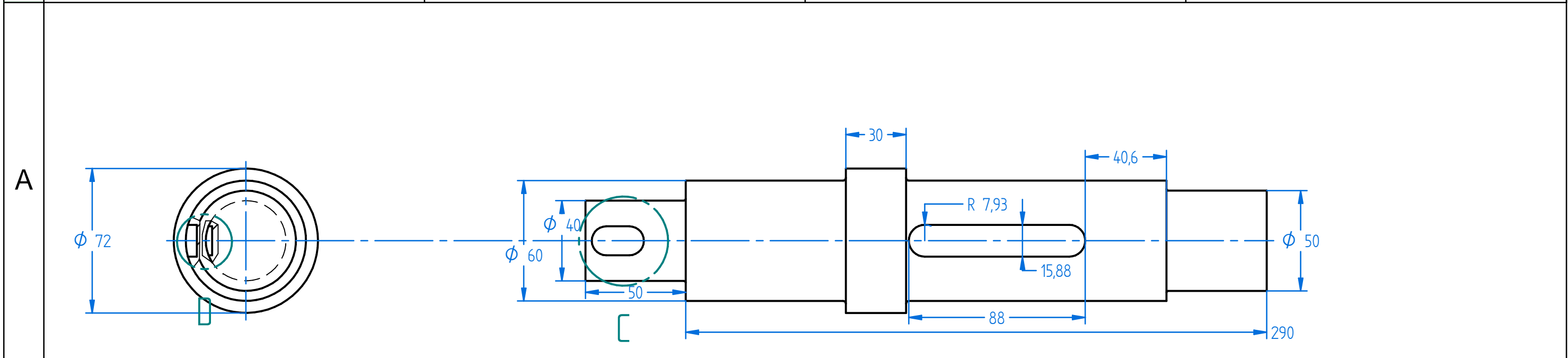



DETALLE C



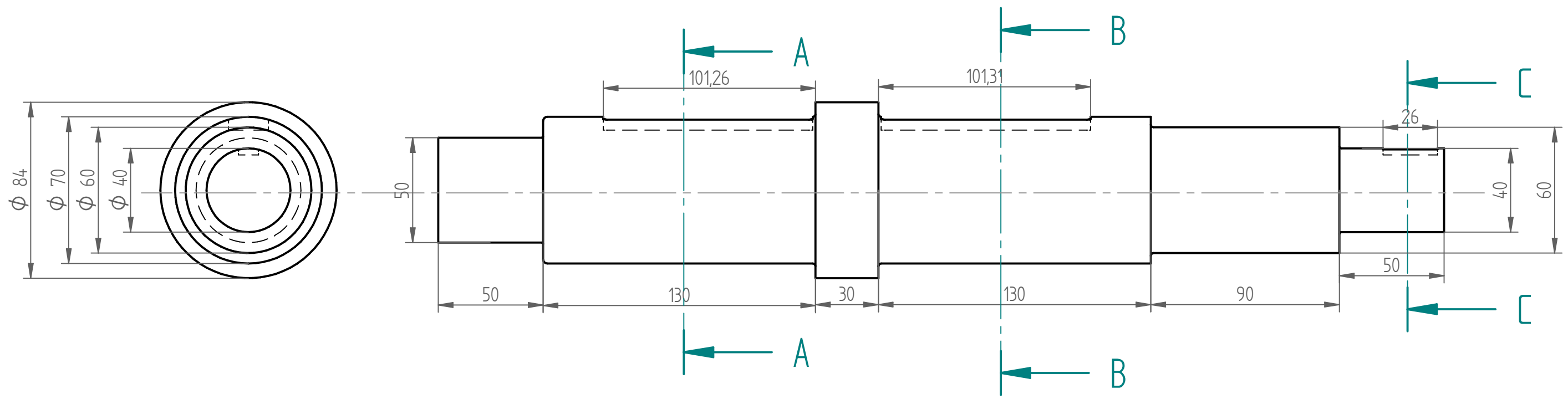
mm	PERMISSIBLE DEVIATION - ISO 2768 - m			
	fine (f)	medium (m)	coarse (c)	very coarse (v)
Over 0,5 up to 3	±0,05	±0,1	±0,2	-
Over 3 up to 6	±0,05	±0,1	±0,3	±0,5
Over 6 up to 30	±0,1	±0,2	±0,5	±1
Over 30 up to 120	±0,15	±0,3	±0,8	±1,15
Over 120 up to 400	±0,2	±0,5	±1,2	±2,5
Over 400 up to 1000	±0,3	±0,8	±2	±4
Over 1000 up to 2000	±0,5	±1,2	±3	±6
Over 2000 up to 4000	-	±2	±4	±8

				FACULTY: INGENIERIAS
PROGRAM: INGENIERIA MECANICA				COURSE: TRABAJO DE GRADO
FUA	DRAWN BY: OFID MURCIA	CHECKED BY: EDGAR CHALA	APPROVED BY: EDGAR CHALA	REMOVE SHARP EDGES AND BURRS
NAME	DATE	SIGN		DO NOT MEASURE ON THE DRAWING
MATERIAL: AISI 4140	TREATMENT:	SURFACE FINISH: 120		SYSTEM: ISO A
SCALE: 2:1	DIMENSIONS IN: mm	DESCRIPTION: EJE 2		PLAN CODE:
QUANTITY: 1	SHEET NO.: 4	TOTAL SHEETS: 14		

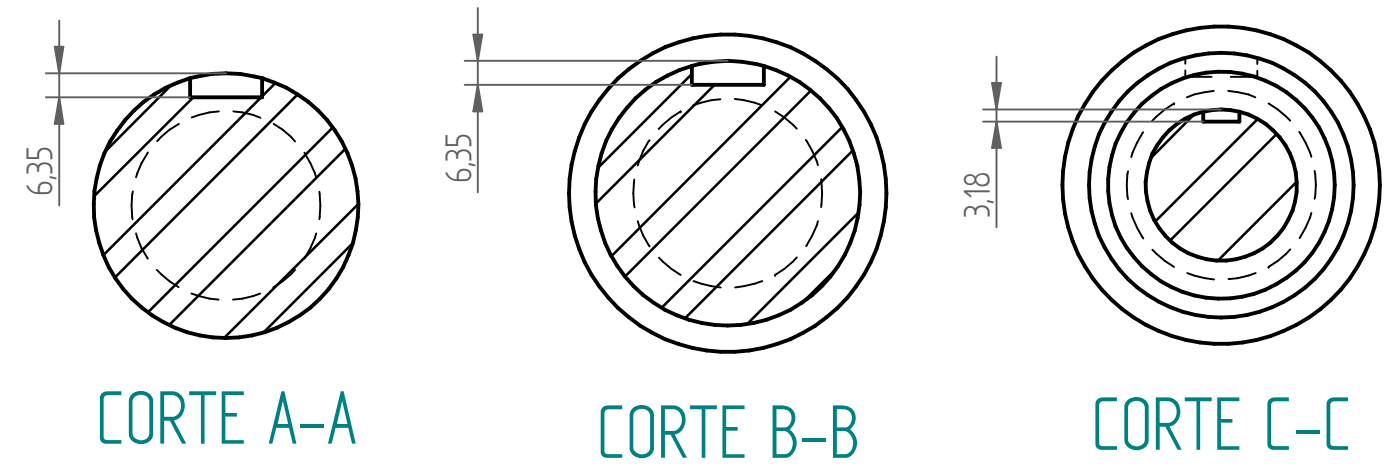


PERMISSIBLE DEVIATION - ISO 2768 - m									FACULTY: INGENIERIAS		
mm	fine (f)	medium (m)	coarse (c)	very coarse (v)	PROGRAM: INGENIERIA MECANICA				COURSE: TRABAJO DE GRADO		
Over 0,5 up to 3	±0,05	±0,1	±0,2	-	FUA	DRAWN BY:	CHECKED BY:	APPROVED BY:	REMOVE SHARP EDGES AND BURRS		
Over 3 up to 6	±0,05	±0,1	±0,3	±0,5	NAME	OFID MURCIA	EDGAR CHALA	EDGAR CHALA	DO NOT MEASURE ON THE DRAWING		
Over 6 up to 30	±0,1	±0,2	±0,5	±1	DATE				SYSTEM: ISO A		
Over 30 up to 120	±0,15	±0,3	±0,8	±1,15	SIGN				SURFACE FINISH: 120		
Over 120 up to 400	±0,2	±0,5	±1,2	±2,5	MATERIAL:	AISI 1045		TREATMENT:			
Over 400 up to 1000	±0,3	±0,8	±2	±4	SCALE:	2:1		DESCRIPTION:	EJE 3		
Over 1000 up to 2000	±0,5	±1,2	±3	±6	QUANTITY:	1		SHEET NO.:	5		
Over 2000 up to 4000	-	±2	±4	±8	TOTAL SHEETS:	14					

A



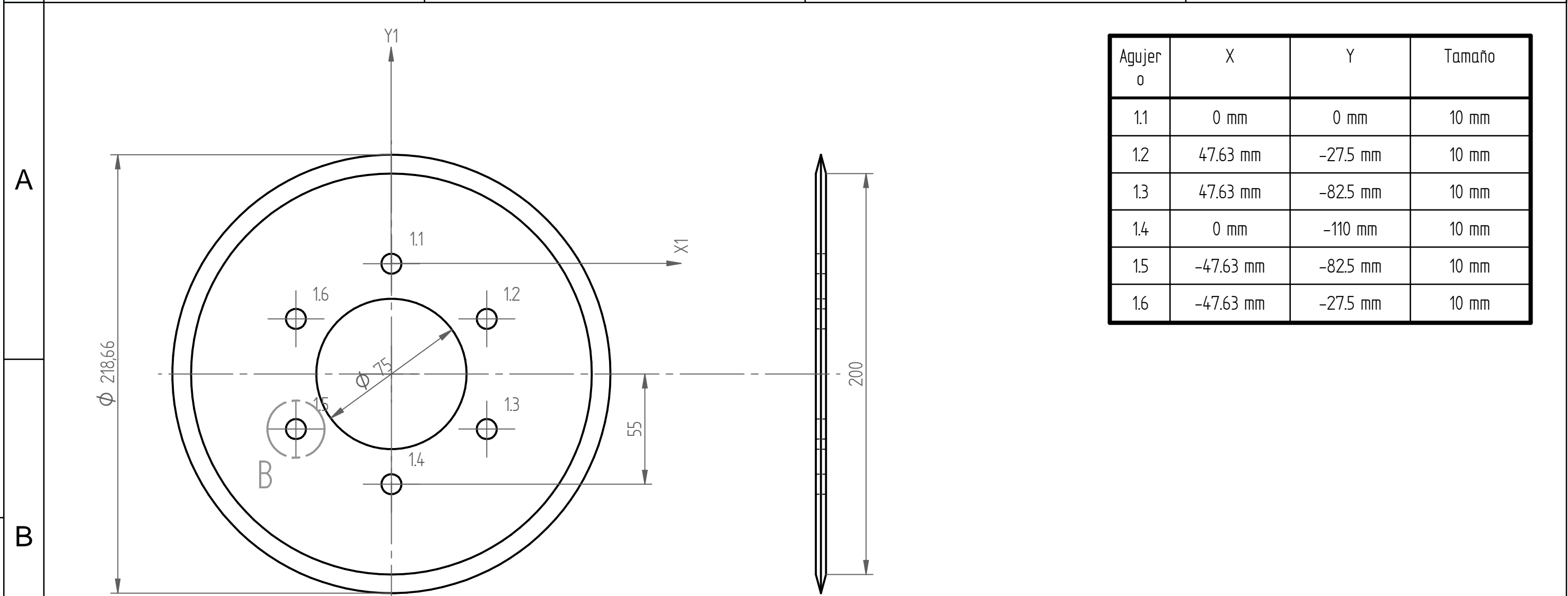
B



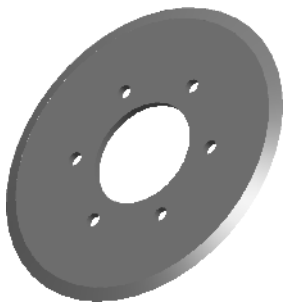
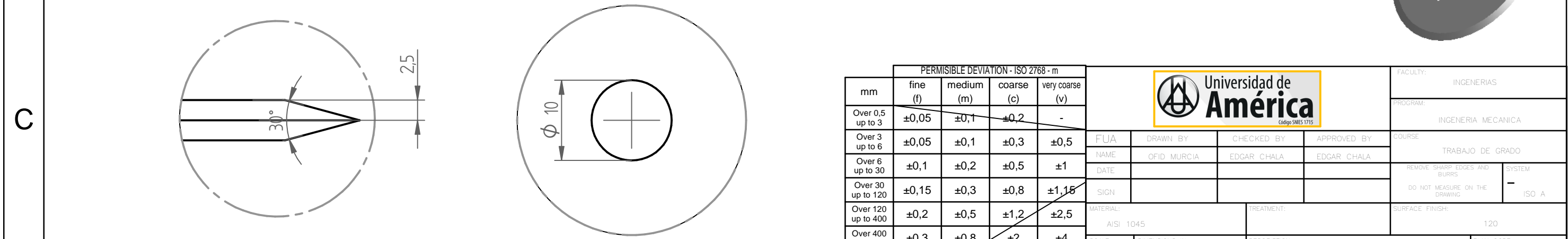
C



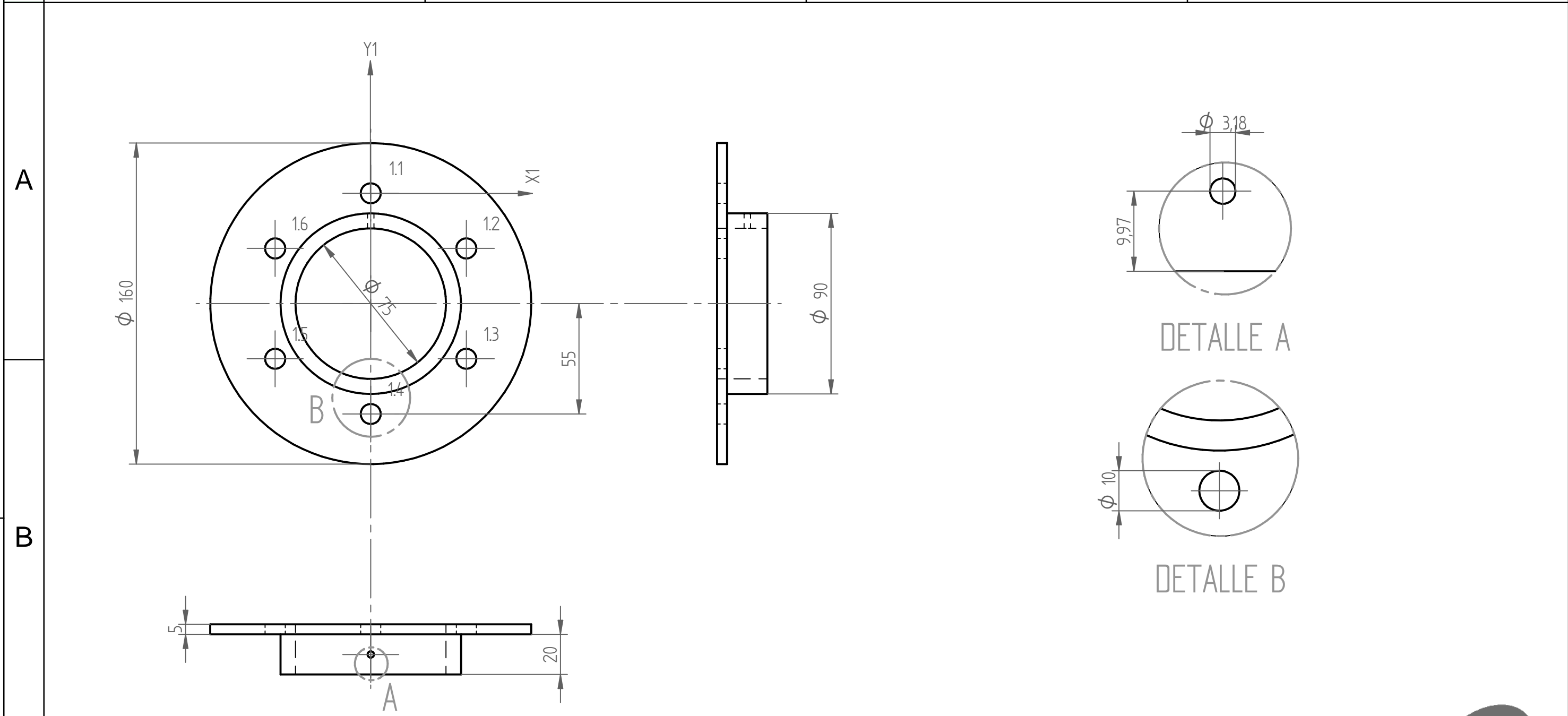
PERMISSIBLE DEVIATION - ISO 2768 - m					 Universidad de América <small>Código SMES 1715</small>				FACULTY: INGENIERIAS	
mm	fine (f)	medium (m)	coarse (c)	very coarse (v)					PROGRAM: INGENIERIA MECANICA	
Over 0,5 up to 3	±0,05	±0,1	±0,2	-					COURSE: TRABAJO DE GRADO	
Over 3 up to 6	±0,05	±0,1	±0,3	±0,5	DRAWN BY: OFID MURCIA		CHECKED BY: EDGAR CHALA		APPROVED BY: EDGAR CHALA	
Over 6 up to 30	±0,1	±0,2	±0,5	±1	DATE:				REMOVE SHARP EDGES AND BURRS: -	
Over 30 up to 120	±0,15	±0,3	±0,8	±1,15	SIGN:				DO NOT MEASURE ON THE DRAWING: -	
Over 120 up to 400	±0,2	±0,5	±1,2	±2,5	MATERIAL: AISI 4140		TREATMENT:		SURFACE FINISH: 200	
Over 400 up to 1000	±0,3	±0,8	±2	±4	SCALE: 1:2		DIMENSIONS IN: mm		DESCRIPTION: EJE NUMERO 4	
Over 1000 up to 2000	±0,5	±1,2	±3	±6	QUANTITY: 1		SHEET NO.: 6		TOTAL SHEETS: 14	
Over 2000 up to 4000	-	±2	±4	±8						



Agujero	X	Y	Tamaño
1.1	0 mm	0 mm	10 mm
1.2	47.63 mm	-27.5 mm	10 mm
1.3	47.63 mm	-82.5 mm	10 mm
1.4	0 mm	-110 mm	10 mm
1.5	-47.63 mm	-82.5 mm	10 mm
1.6	-47.63 mm	-27.5 mm	10 mm

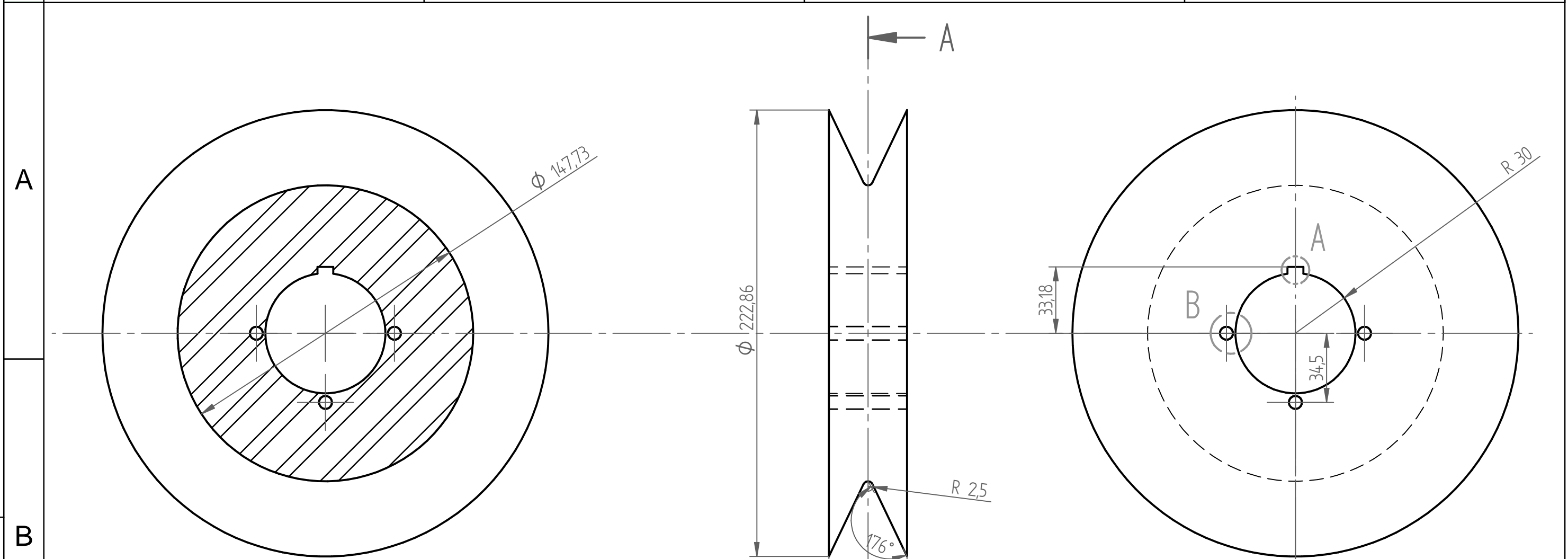


PERMISSIBLE DEVIATION - ISO 2768 - m					Universidad de América <small>Código SMS 1715</small>				FACULTY: INGENIERIAS	
mm	fine (f)	medium (m)	coarse (c)	very coarse (v)					PROGRAM: INGENIERIA MECANICA	
Over 0,5 up to 3	±0,05	±0,1	±0,2	-					COURSE: TRABAJO DE GRADO	
Over 3 up to 6	±0,05	±0,1	±0,3	±0,5	FUA		DRAWN BY: OFID MURCIA		CHECKED BY: EDGAR CHALA	
Over 6 up to 30	±0,1	±0,2	±0,5	±1	NAME		DATE		APPROVED BY: EDGAR CHALA	
Over 30 up to 120	±0,15	±0,3	±0,8	±1,15	SIGN				REMOVE SHARP EDGES AND BURRS	
Over 120 up to 400	±0,2	±0,5	±1,2	±2,5	MATERIAL: AISI 1045		TREATMENT:		DO NOT MEASURE ON THE DRAWING	
Over 400 up to 1000	±0,3	±0,8	±2	±4	SCALE: 2:1		DIMENSIONS IN: mm		SYSTEM: ISO A	
Over 1000 up to 2000	±0,5	±1,2	±3	±6	QUANTITY: 1		SHEET NO.: 7		SURFACE FINISH: 120	
Over 2000 up to 4000	-	±2	±4	±8	TOTAL SHEETS: 14		CUCHILLA			

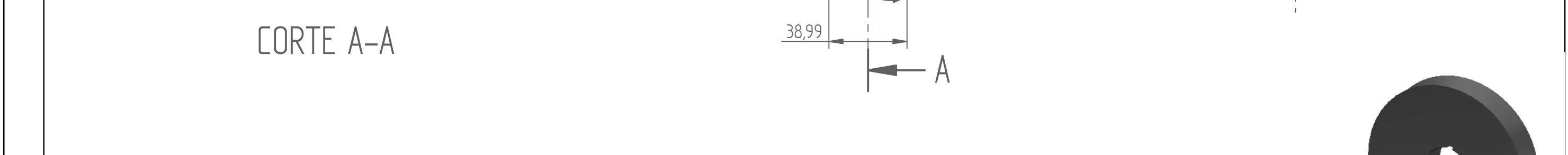
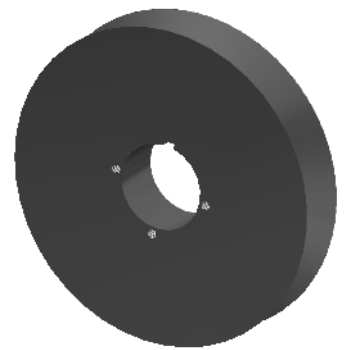


Agujero	X	Y	Tamaño
1.1	0 mm	0 mm	10 mm
1.2	47.63 mm	-27.5 mm	10 mm
1.3	47.63 mm	-82.5 mm	10 mm
1.4	0 mm	-110 mm	10 mm
1.5	-47.63 mm	-82.5 mm	10 mm
1.6	-47.63 mm	-27.5 mm	10 mm

PERMISSIBLE DEVIATION - ISO 2768 - m									FACULTY: INGENIERIAS			
mm	fine (f)	medium (m)	coarse (c)	very coarse (v)	PROGRAM: INGENIERIA MECANICA				COURSE: TRABAJO DE GRADO			
Over 0,5 up to 3	±0,05	±0,1	±0,2	-	NAME	OFID MURCIA	CHECKED BY	EDGAR CHALA	APPROVED BY	EDGAR CHALA	REMOVE SHARP EDGES AND BURRS	SYSTEM
Over 3 up to 6	±0,05	±0,1	±0,3	±0,5	DATE						DO NOT MEASURE ON THE DRAWING	ISO A
Over 6 up to 30	±0,1	±0,2	±0,5	±1	SIGN							
Over 30 up to 120	±0,15	±0,3	±0,8	±1,15	MATERIAL:	AISI 1045		TREATMENT:			SURFACE FINISH:	120
Over 120 up to 400	±0,2	±0,5	±1,2	±2,5	SCALE:	2:1		DESCRIPTION:	MANZANA CUCHILLA		PLAN CODE:	
Over 400 up to 1000	±0,3	±0,8	±2	±4	QUANTITY:	1		SHEET NO.:	8		TOTAL SHEETS:	14
Over 1000 up to 2000	±0,5	±1,2	±3	±6								
Over 2000 up to 4000	-	±2	±4	±8								




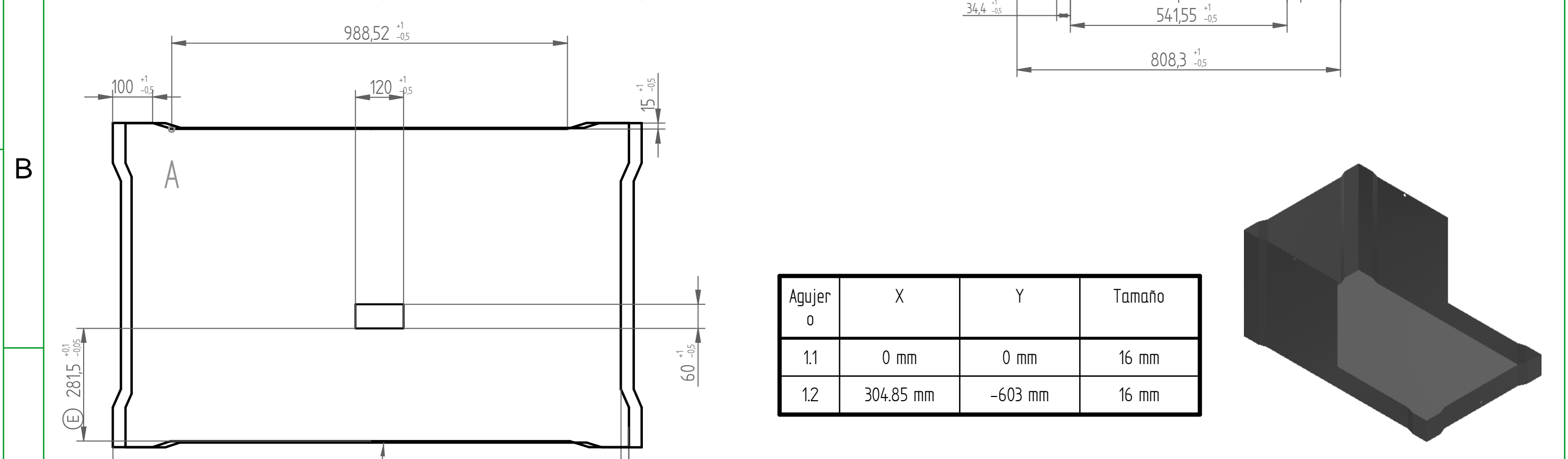
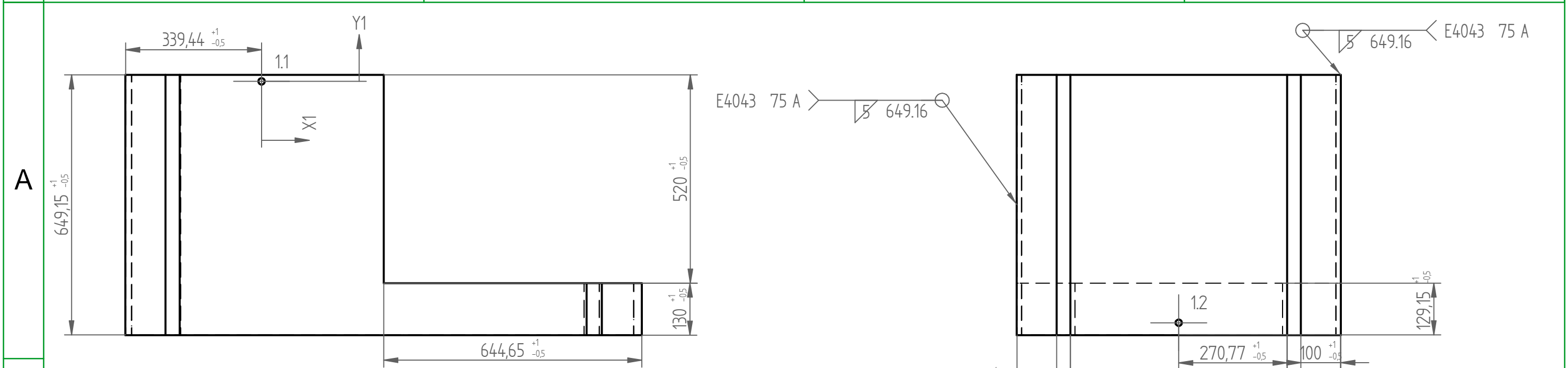
CORTE A-A



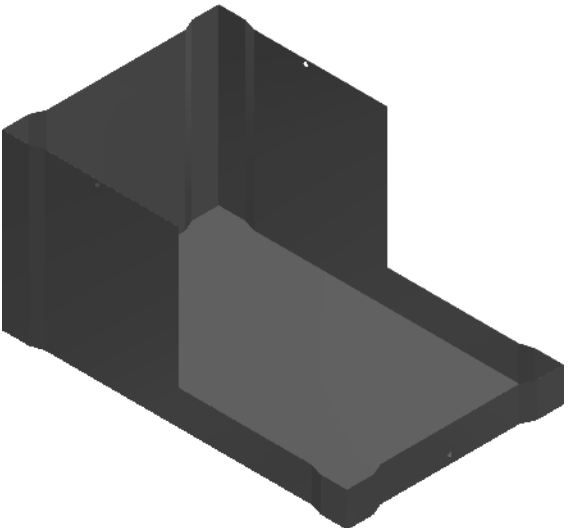
DETALLE A

DETALLE B

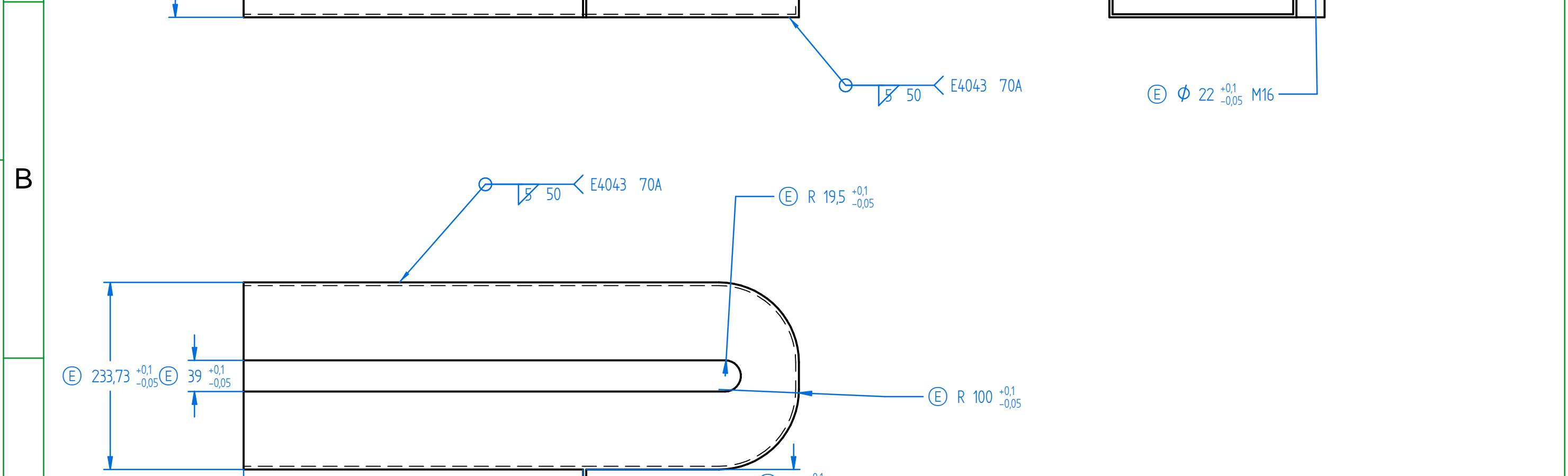
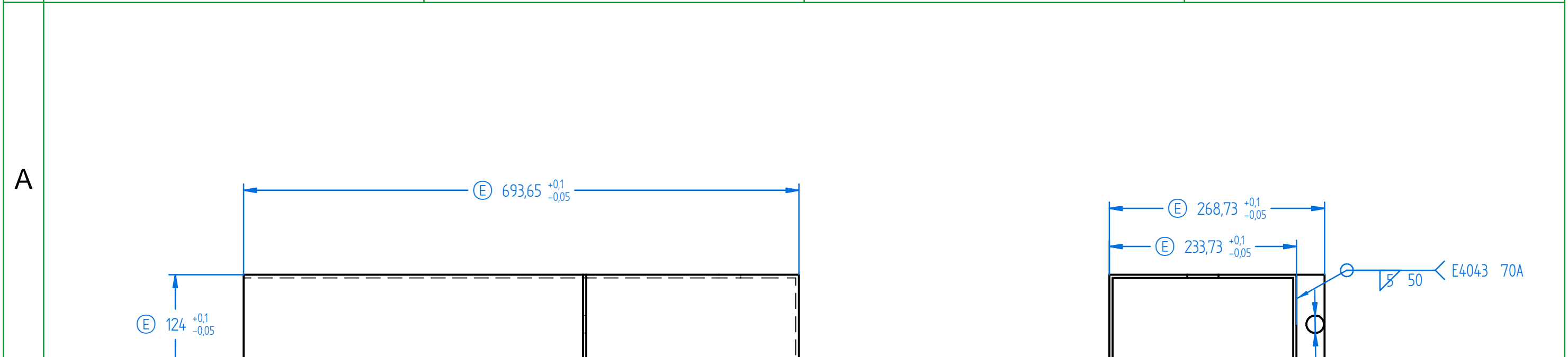
PERMISSIBLE DEVIATION - ISO 2768 - m									FACULTY: INGENIERIAS		
mm	fine (f)	medium (m)	coarse (c)	very coarse (v)	PROGRAM: INGENIERIA MECANICA				COURSE: TRABAJO DE GRADO		
Over 0,5 up to 3	±0,05	±0,1	±0,2	-	FUA	DRAWN BY:	CHECKED BY:	APPROVED BY:	REMOVE SHARP EDGES AND BURRS		
Over 3 up to 6	±0,05	±0,1	±0,3	±0,5	NAME	OFID MURCIA	EDGAR CHALA	EDGAR CHALA	DO NOT MEASURE ON THE DRAWING		
Over 6 up to 30	±0,1	±0,2	±0,5	±1	DATE				SYSTEM: ISO A		
Over 30 up to 120	±0,15	±0,3	±0,8	±1,15	SIGN				SURFACE FINISH: 120		
Over 120 up to 400	±0,2	±0,5	±1,2	±2,5	MATERIAL:	AISI 1045		TREATMENT:			
Over 400 up to 1000	±0,3	±0,8	±2	±4	SCALE:	2:1		DESCRIPTION:	ROLDANA		
Over 1000 up to 2000	±0,5	±1,2	±3	±6	QUANTITY:	1		SHEET NO.:	9		
Over 2000 up to 4000	-	±2	±4	±8	TOTAL SHEETS:	14					



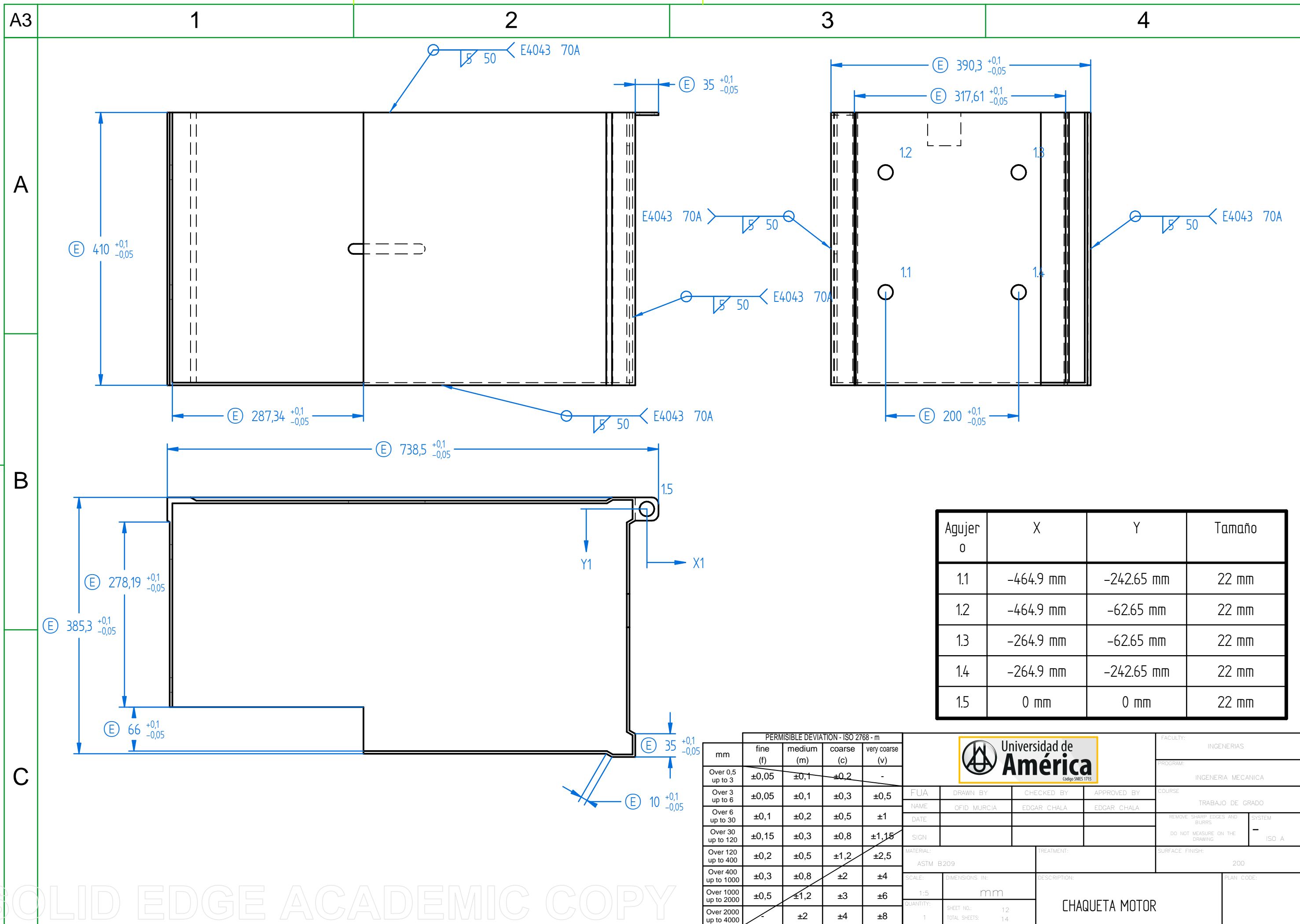
Agujero	X	Y	Tamaño
0			
1.1	0 mm	0 mm	16 mm
1.2	304.85 mm	-603 mm	16 mm



PERMISSIBLE DEVIATION - ISO 2768 - m					 Universidad de América <small>Código SMS 1715</small>				FACULTY: INGENIERIAS	
mm	fine (f)	medium (m)	coarse (c)	very coarse (v)					PROGRAM: INGENIERIA MECANICA	
Over 0,5 up to 3	±0,05	±0,1	±0,2	-	FUA	DRAWN BY	CHECKED BY	APPROVED BY	COURSE: TRABAJO DE GRADO	
Over 3 up to 6	±0,05	±0,1	±0,3	±0,5	NAME	OFID MURCIA	EDGAR CHALA	EDGAR CHALA	REMOVE SHARP EDGES AND BURRS	
Over 6 up to 30	±0,1	±0,2	±0,5	±1	DATE				DO NOT MEASURE ON THE DRAWING	
Over 30 up to 120	±0,15	±0,3	±0,8	±1,15	SIGN				SYSTEM: ISO A	
Over 120 up to 400	±0,2	±0,5	±1,2	±2,5	MATERIAL: ASTM B209		TREATMENT:		SURFACE FINISH: 200	
Over 400 up to 1000	±0,3	±0,8	±2	±4	SCALE: 1:10	DIMENSIONS IN: mm		DESCRIPTION: CHAQUETA		PLAN CODE:
Over 1000 up to 2000	±0,5	±1,2	±3	±6	QUANTITY: 1	SHEET NO.: 10				
Over 2000 up to 4000	-	±2	±4	±8	TOTAL SHEETS: 14					



mm	PERMISSIBLE DEVIATION - ISO 2768 - m				FUA	DRAWN BY	CHECKED BY	APPROVED BY	FACULTY:
	fine (f)	medium (m)	coarse (c)	very coarse (v)					
Over 0,5 up to 3	$\pm 0,05$	$\pm 0,1$	$\pm 0,2$	-	NAME	OFID MURCIA	EDGAR CHALA	EDGAR CHALA	PROGRAM:
Over 3 up to 6	$\pm 0,05$	$\pm 0,1$	$\pm 0,3$	$\pm 0,5$	DATE				INGENIERIA MECANICA
Over 6 up to 30	$\pm 0,1$	$\pm 0,2$	$\pm 0,5$	± 1	SIGN				COURSE
Over 30 up to 120	$\pm 0,15$	$\pm 0,3$	$\pm 0,8$	$\pm 1,15$	MATERIAL:	ASTM B209	TREATMENT:		TRABAJO DE GRADO
Over 120 up to 400	$\pm 0,2$	$\pm 0,5$	$\pm 1,2$	$\pm 2,5$	SCALE:	1:5	DIMENSIONS IN:	mm	REMOVE SHARP EDGES AND BURRS
Over 400 up to 1000	$\pm 0,3$	$\pm 0,8$	± 2	± 4	QUANTITY:	1	SHEET NO.:	11	DO NOT MEASURE ON THE DRAWING
Over 1000 up to 2000	$\pm 0,5$	$\pm 1,2$	± 3	± 6	TOTAL SHEETS:	14	DESCRIPTION:		SYSTEM
Over 2000 up to 4000	-	± 2	± 4	± 8			CHAQUETA CADENA		ISO A



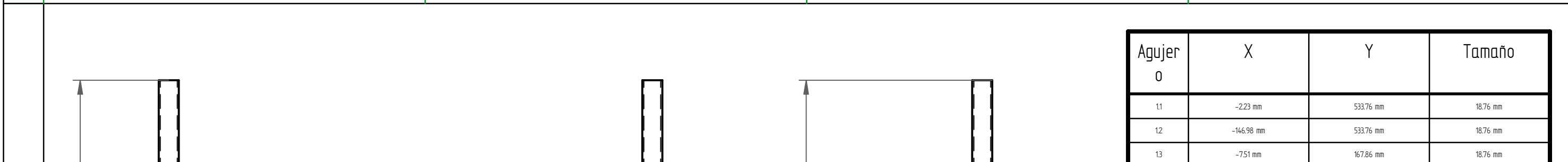
Agujero	X	Y	Tamaño
0			
1.1	-464.9 mm	-242.65 mm	22 mm
1.2	-464.9 mm	-62.65 mm	22 mm
1.3	-264.9 mm	-62.65 mm	22 mm
1.4	-264.9 mm	-242.65 mm	22 mm
1.5	0 mm	0 mm	22 mm

mm	PERMISSIBLE DEVIATION - ISO 2768 - m			
	fine (f)	medium (m)	coarse (c)	very coarse (v)
Over 0,5 up to 3	±0,05	±0,1	±0,2	-
Over 3 up to 6	±0,05	±0,1	±0,3	±0,5
Over 6 up to 30	±0,1	±0,2	±0,5	±1
Over 30 up to 120	±0,15	±0,3	±0,8	±1,15
Over 120 up to 400	±0,2	±0,5	±1,2	±2,5
Over 400 up to 1000	±0,3	±0,8	±2	±4
Over 1000 up to 2000	±0,5	±1,2	±3	±6
Over 2000 up to 4000	-	±2	±4	±8

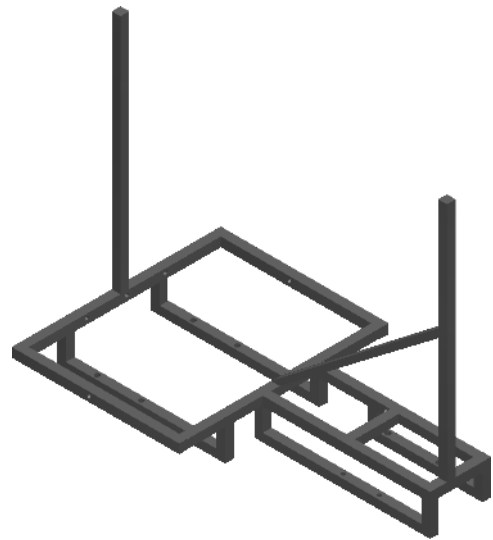
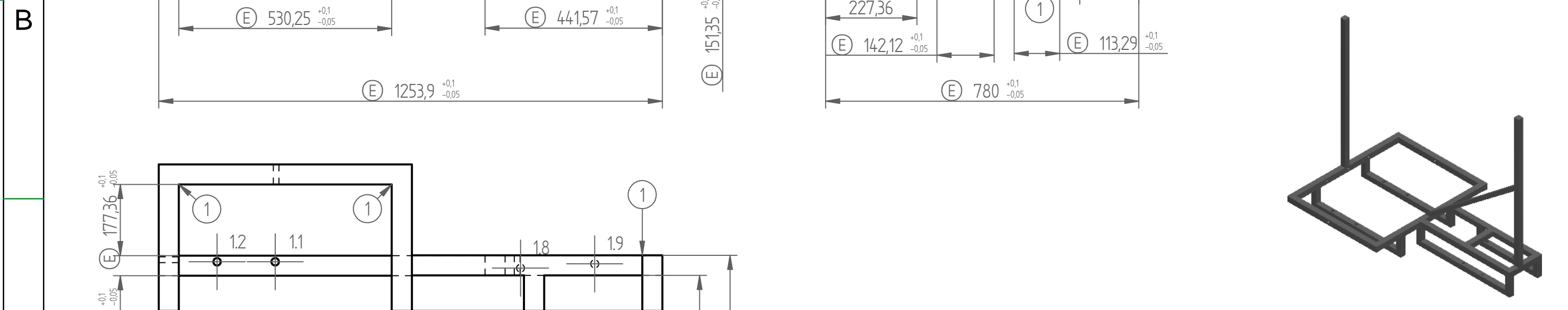
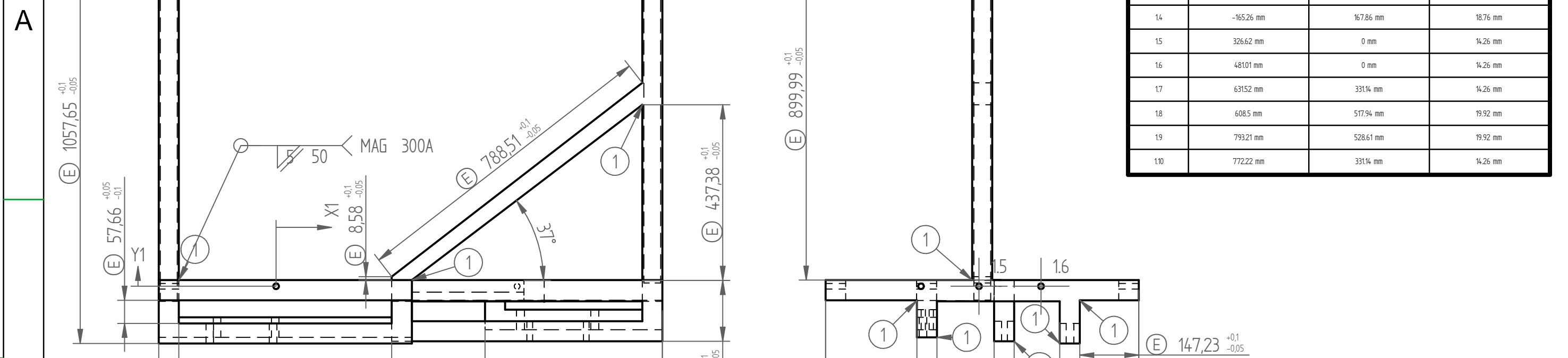



FACULTY: INGENIERIAS		PROGRAM: INGENIERIA MECANICA	
COURSE: TRABAJO DE GRADO		REMOVE SHARP EDGES AND BURRS	
DO NOT MEASURE ON THE DRAWING		SYSTEM: ISO A	
MATERIAL: ASTM B209		SURFACE FINISH: 200	
SCALE: 1:5		DIMENSIONS IN: mm	
QUANTITY: 1		DESCRIPTION: CHAQUETA MOTOR	
SHEET NO.: 12		TOTAL SHEETS: 14	
PLAN CODE:			

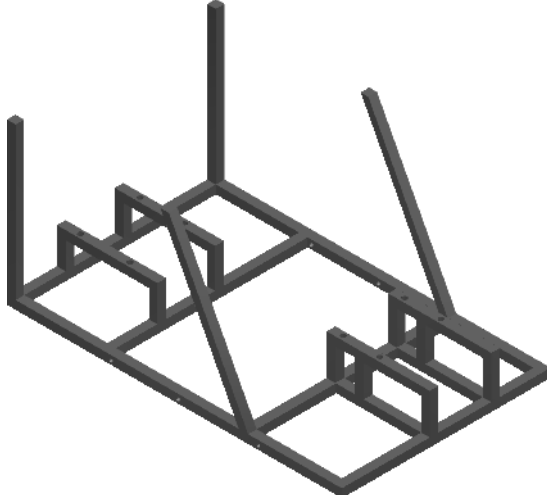
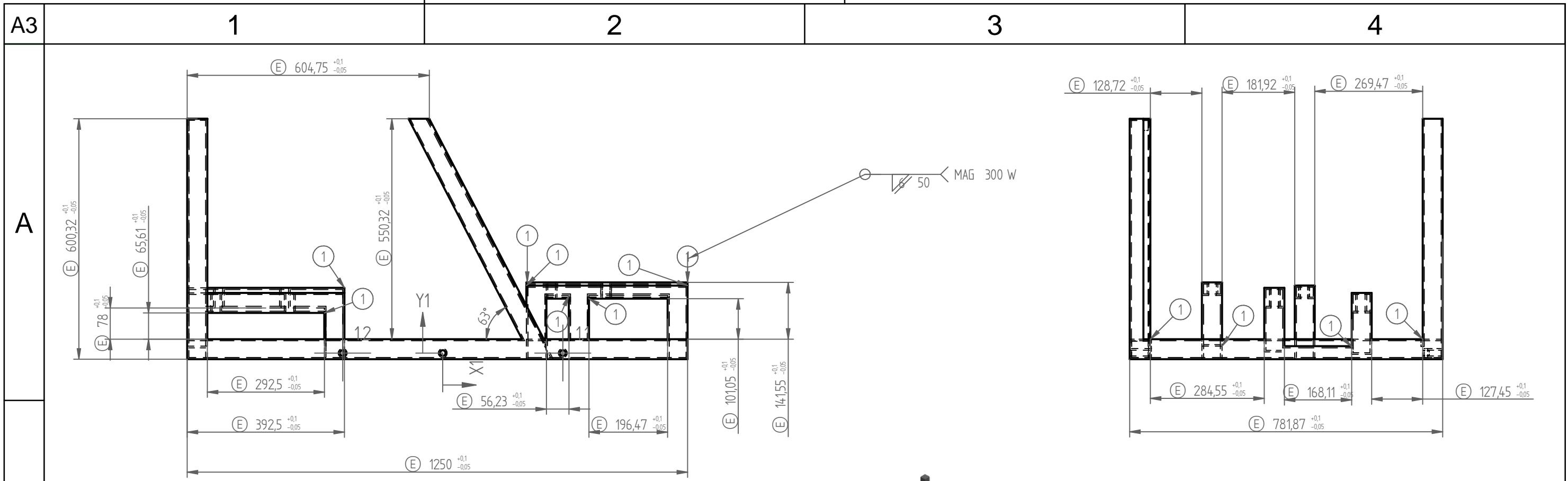
SOLID EDGE ACADEMIC COPY



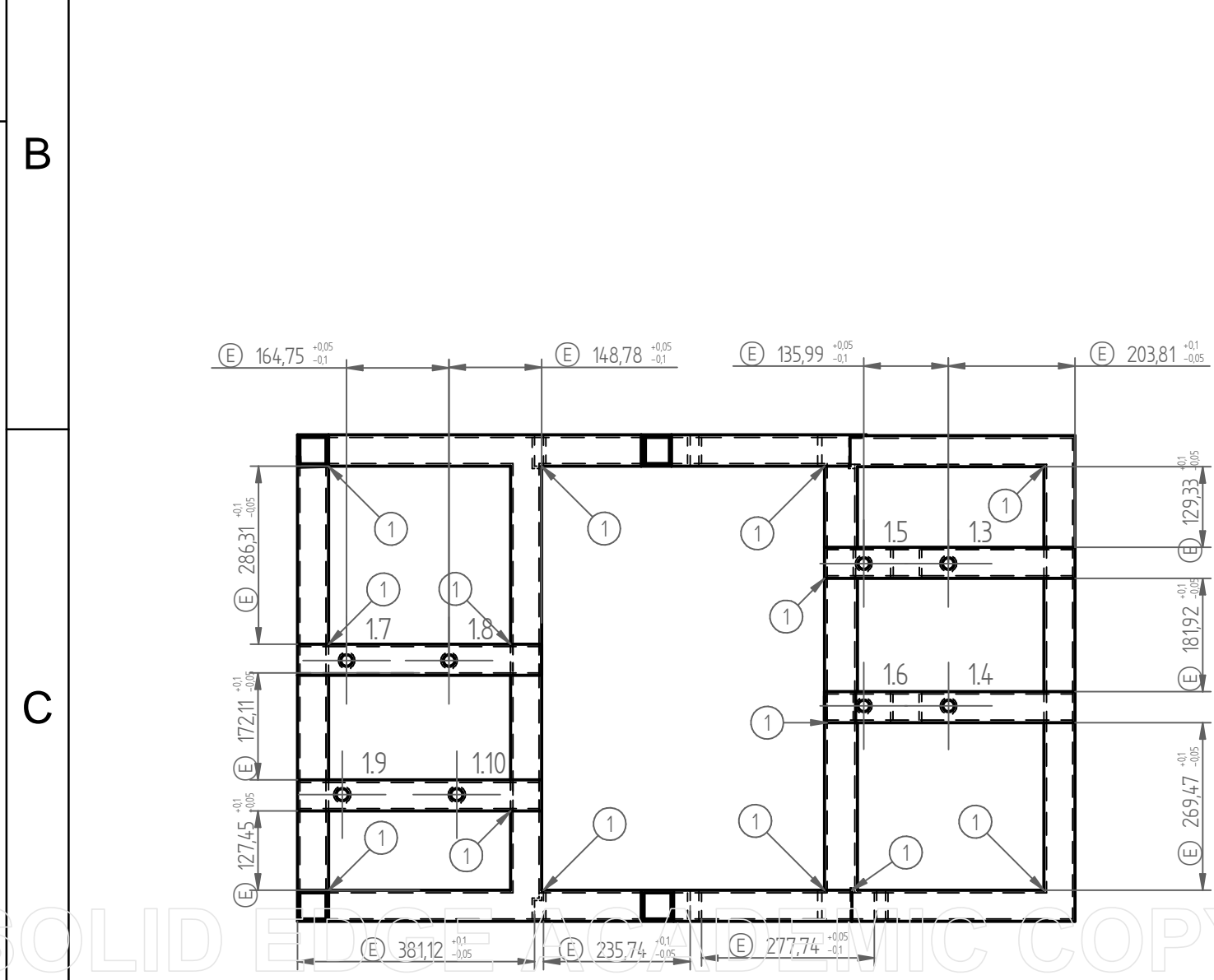
Agujero	X	Y	Tamaño
11	-223 mm	533.76 mm	18.76 mm
12	-146.98 mm	533.76 mm	18.76 mm
13	-751 mm	167.86 mm	18.76 mm
14	-165.26 mm	167.86 mm	18.76 mm
15	326.62 mm	0 mm	14.26 mm
16	481.01 mm	0 mm	14.26 mm
17	631.52 mm	331.14 mm	14.26 mm
18	608.5 mm	517.94 mm	19.92 mm
19	793.21 mm	528.61 mm	19.92 mm
1.10	772.22 mm	331.14 mm	14.26 mm



PERMISSIBLE DEVIATION - ISO 2768 - m					 Universidad de América <small>Código SMS 1715</small>				FACULTY: INGENIERIAS	
mm	fine (f)	medium (m)	coarse (c)	very coarse (v)	FUA	DRAWN BY	CHECKED BY	APPROVED BY	PROGRAM: INGENIERIA MECANICA	
Over 0.5 up to 3	±0,05	±0,1	±0,2	-	NAME	OFID MURCIA	EDGAR CHALA	EDGAR CHALA	COURSE: TRABAJO DE GRADO	
Over 3 up to 6	±0,05	±0,1	±0,3	±0,5	DATE				REMOVE SHARP EDGES AND BURRS	
Over 6 up to 30	±0,1	±0,2	±0,5	±1	SIGN				DO NOT MEASURE ON THE DRAWING	
Over 30 up to 120	±0,15	±0,3	±0,8	±1,15	MATERIAL:	ASTM A 36			SURFACE FINISH: 200	
Over 120 up to 400	±0,2	±0,5	±1,2	±2,5	SCALE:	1:10			DESCRIPTION: ESTRUCTURA 2	
Over 400 up to 1000	±0,3	±0,8	±2	±4	QUANTITY:	1			PLAN CODE:	
Over 1000 up to 2000	±0,5	±1,2	±3	±6	SHEET NO.:	14				
Over 2000 up to 4000	-	±2	±4	±8	TOTAL SHEETS:	14				



Agujero	X	Y	Tamaño
0			
1.1	300 mm	0 mm	14.26 mm
1.2	-250 mm	0 mm	14.26 mm
1.3	407.94 mm	469.04 mm	18.76 mm
1.4	408.26 mm	240.21 mm	18.76 mm
1.5	271.96 mm	469.04 mm	18.76 mm
1.6	271.96 mm	240.31 mm	18.76 mm
1.7	-559.28 mm	313.33 mm	18.76 mm
1.8	-394.53 mm	313.21 mm	18.76 mm
1.9	-566.3 mm	97.6 mm	19.84 mm
1.10	-382.16 mm	97.6 mm	19.84 mm



mm	PERMISSIBLE DEVIATION - ISO 2768 - m			
	fine (f)	medium (m)	coarse (c)	very coarse (v)
Over 0,5 up to 3	±0,05	±0,1	±0,2	-
Over 3 up to 6	±0,05	±0,1	±0,3	±0,5
Over 6 up to 30	±0,1	±0,2	±0,5	±1
Over 30 up to 120	±0,15	±0,3	±0,8	±1,15
Over 120 up to 400	±0,2	±0,5	±1,2	±2,5
Over 400 up to 1000	±0,3	±0,8	±2	±4
Over 1000 up to 2000	±0,5	±1,2	±3	±6
Over 2000 up to 4000	-	±2	±4	±8



Universidad de América
Código SMS 1715

FACULTY: INGENIERIAS

PROGRAM: INGENIERIA MECANICA

COURSE: TRABAJO DE GRADO

REMOVE SHARP EDGES AND BURRS

DO NOT MEASURE ON THE DRAWING

SYSTEM: ISO A

SURFACE FINISH: 200

PLAN CODE:

FUJA	DRAWN BY	CHECKED BY	APPROVED BY
NAME	OFID MURCIA	EDGAR CHALA	EDGAR CHALA
DATE			
SIGN			
MATERIAL:	ASTM A 36		
SCALE:	DIMENSIONS IN: mm		
QUANTITY:	DESCRIPTION: ESTRUCTURA 1		
1	SHEET NO.: 13	TOTAL SHEETS: 14	

SOLID EDGE ACADEMIC COPY