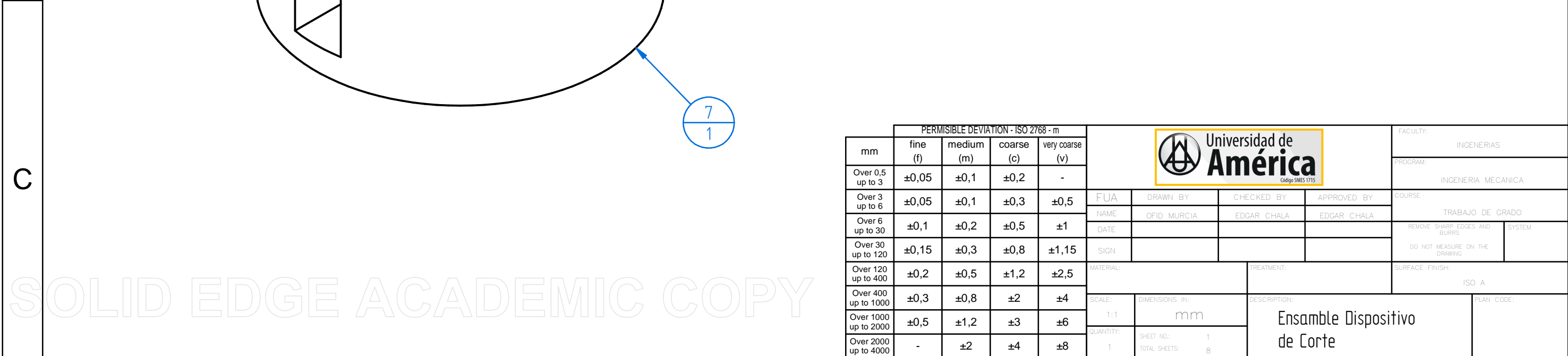
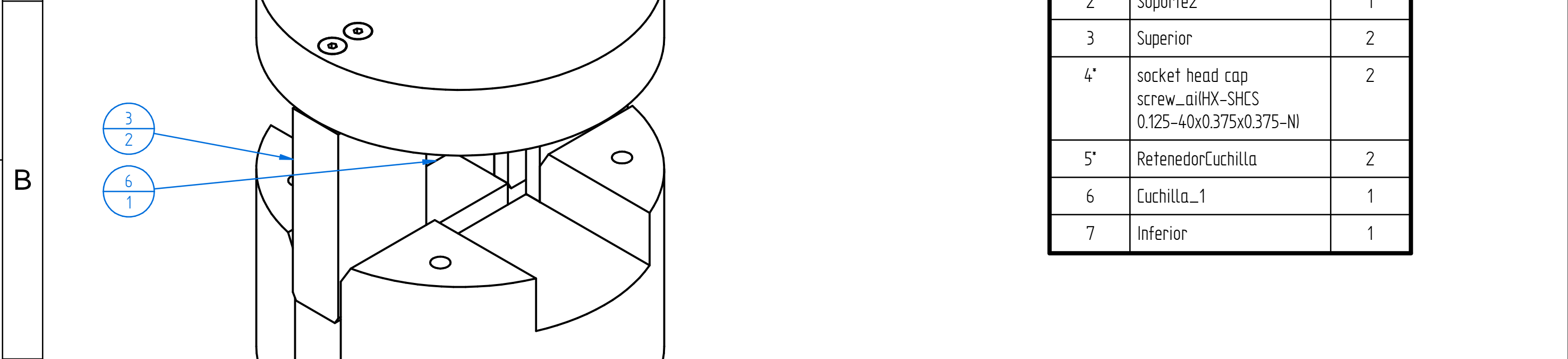
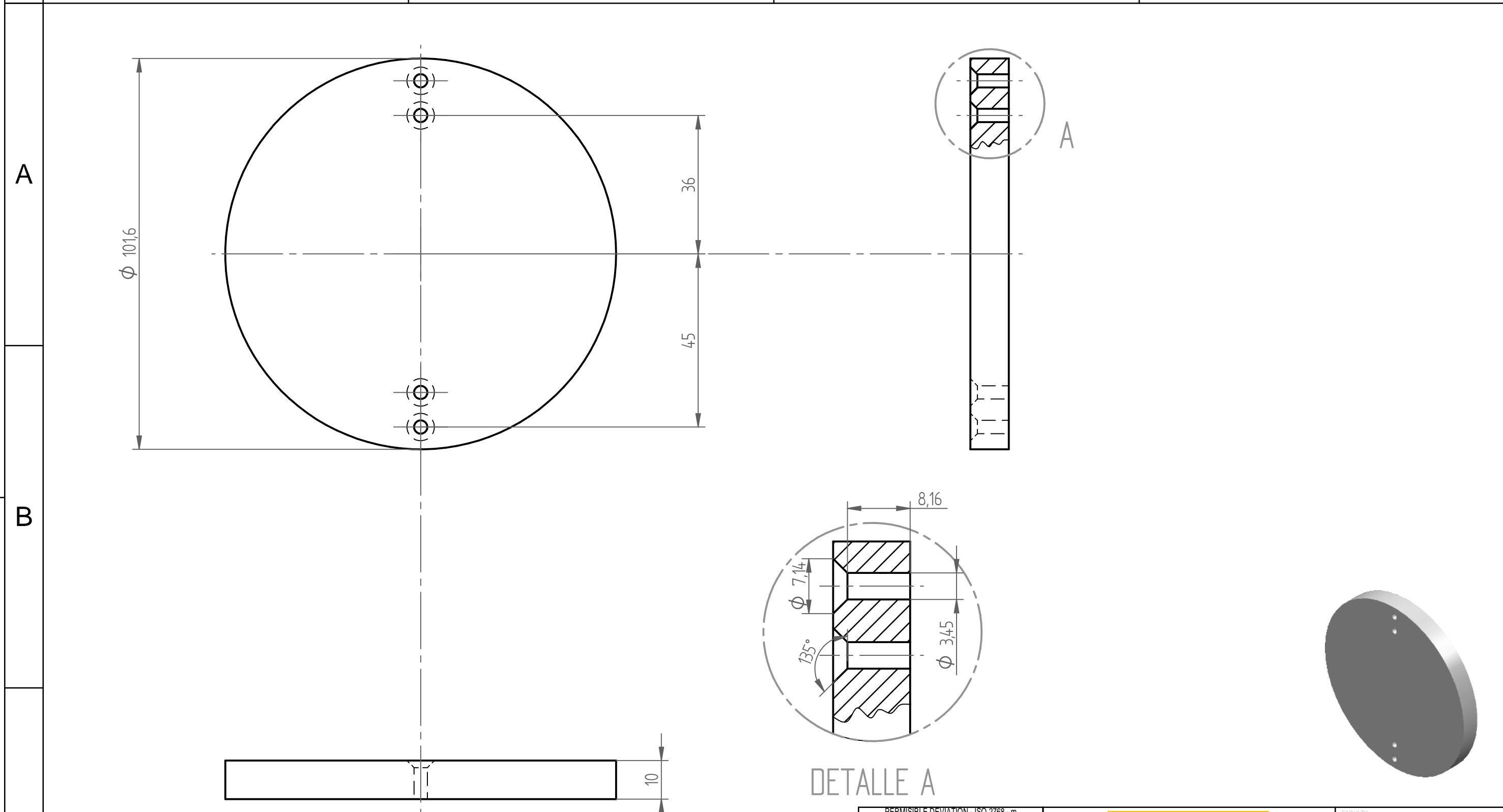


Número de elemento	Nombre archivo (sin extensión)	Cantidad
1	socket countersunk head cap screw_ai(SCHCSREW 0.125-40x1.25x0.75-HX-N)	4
2	Soporte2	1
3	Superior	2
4*	socket head cap screw_ai(HX-SHCS 0.125-40x0.375x0.375-N)	2
5*	RetenedorCuchilla	2
6	Cuchilla_1	1
7	Inferior	1

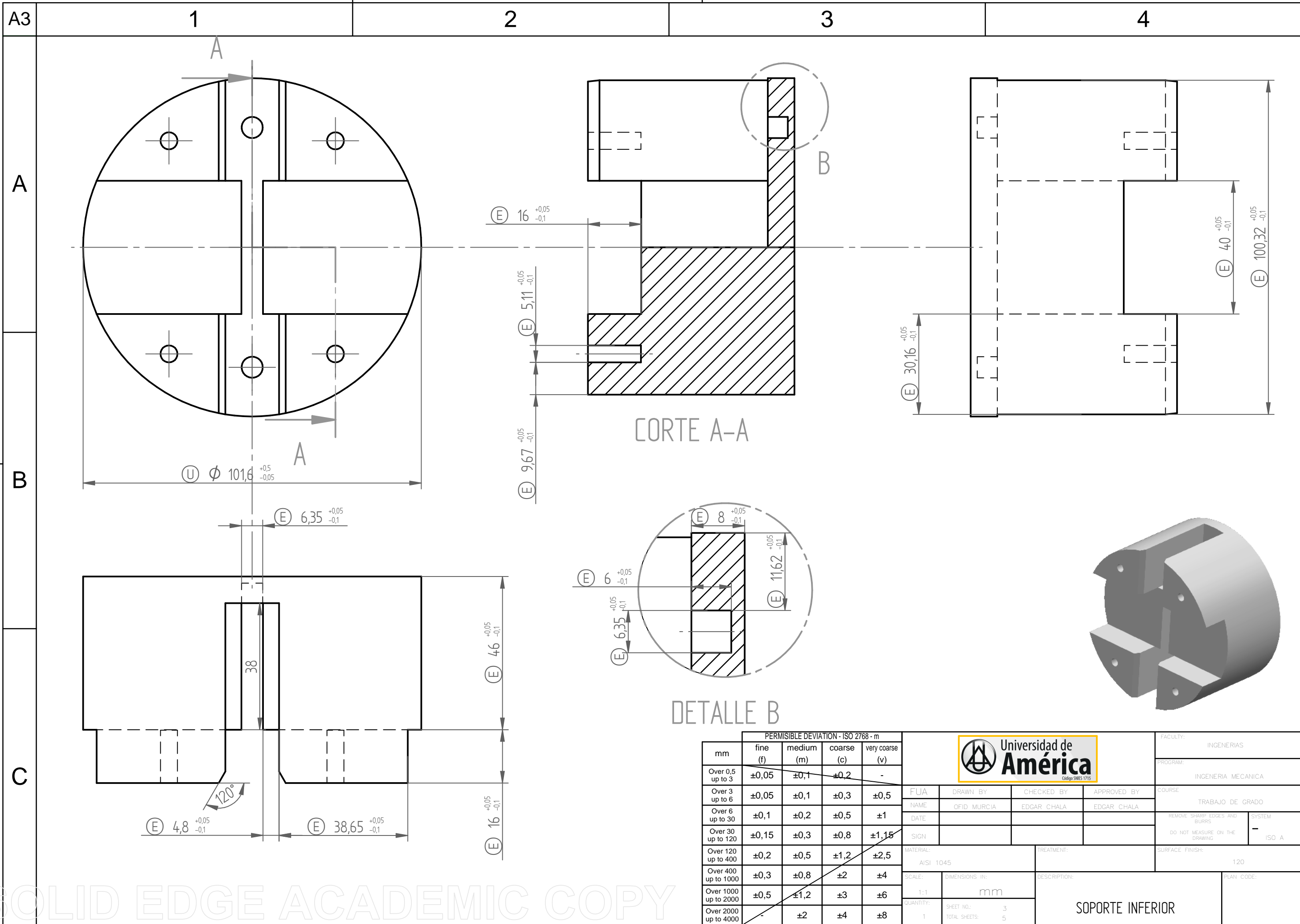


PERMISSIBLE DEVIATION - ISO 2768 - m									FACULTY: INGENIERIAS	
mm	fine (f)	medium (m)	coarse (c)	very coarse (v)					PROGRAM: INGENIERIA MECANICA	
Over 0,5 up to 3	±0,05	±0,1	±0,2	-					COURSE: TRABAJO DE GRADO	
Over 3 up to 6	±0,05	±0,1	±0,3	±0,5	FUJA	DRAWN BY: OFID MURCIA	CHECKED BY: EDGAR CHALA	APPROVED BY: EDGAR CHALA	REMOVE SHARP EDGES AND BURRS	
Over 6 up to 30	±0,1	±0,2	±0,5	±1	NAME	DATE			DO NOT MEASURE ON THE DRAWING	
Over 30 up to 120	±0,15	±0,3	±0,8	±1,15	SIGN			SURFACE FINISH: ISO A		
Over 120 up to 400	±0,2	±0,5	±1,2	±2,5	MATERIAL:		TREATMENT:		DESCRIPTION: Ensamble Dispositivo de Corte	
Over 400 up to 1000	±0,3	±0,8	±2	±4	SCALE: 1:1	DIMENSIONS IN: mm		PLAN CODE:		
Over 1000 up to 2000	±0,5	±1,2	±3	±6	QUANTITY: 1	SHEET NO.: 1				
Over 2000 up to 4000	-	±2	±4	±8	1	TOTAL SHEETS: 8				



DETALLE A

PERMISSIBLE DEVIATION - ISO 2768 - m									FACULTY: INGENIERIAS	
mm	fine (f)	medium (m)	coarse (c)	very coarse (v)	PROGRAM: INGENIERIA MECANICA				COURSE: TRABAJO DE GRADO	
Over 0,5 up to 3	±0,05	±0,1	±0,2	-	FUA	DRAWN BY	CHECKED BY	APPROVED BY	REMOVE SHARP EDGES AND BURRS	
Over 3 up to 6	±0,05	±0,1	±0,3	±0,5	NAME	OFID MURCIA	EDGAR CHALA	EDGAR CHALA	DO NOT MEASURE ON THE DRAWING	
Over 6 up to 30	±0,1	±0,2	±0,5	±1	DATE				SYSTEM: ISO A	
Over 30 up to 120	±0,15	±0,3	±0,8	±1,15	SIGN				SURFACE FINISH: 120	
Over 120 up to 400	±0,2	±0,5	±1,2	±2,5	MATERIAL: AISI 1045		TREATMENT:		DESCRIPTION: SOPORTE 2	
Over 400 up to 1000	±0,3	±0,8	±2	±4	SCALE: 1:1	DIMENSIONS IN: mm		PLAN CODE:		
Over 1000 up to 2000	±0,5	±1,2	±3	±6	QUANTITY: 1	SHEET NO.: 2	TOTAL SHEETS: 8			
Over 2000 up to 4000	-	±2	±4	±8						

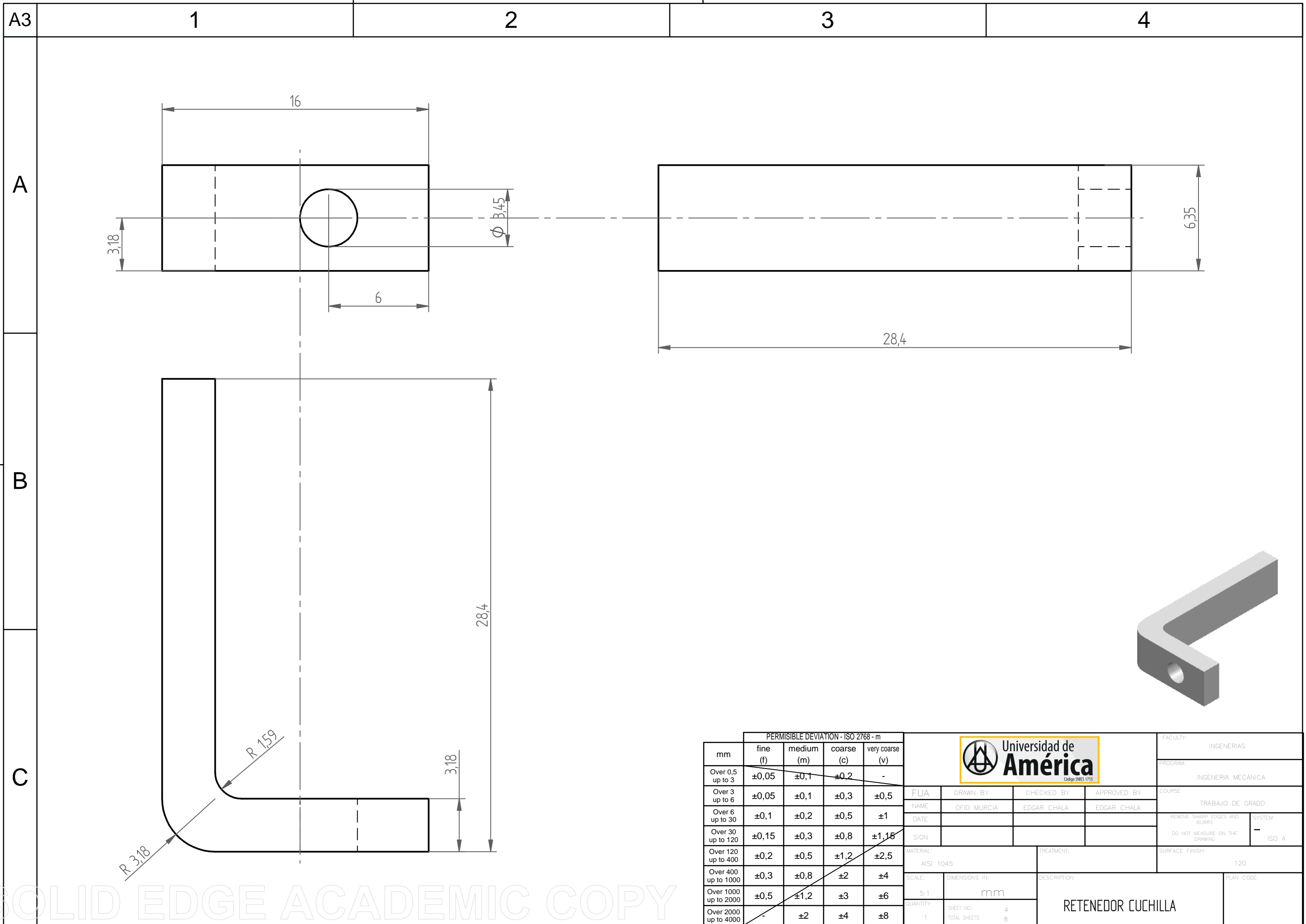



mm	PERMISSIBLE DEVIATION - ISO 2768 - m			
	fine (f)	medium (m)	coarse (c)	very coarse (v)
Over 0,5 up to 3	$\pm 0,05$	$\pm 0,1$	$\pm 0,2$	-
Over 3 up to 6	$\pm 0,05$	$\pm 0,1$	$\pm 0,3$	$\pm 0,5$
Over 6 up to 30	$\pm 0,1$	$\pm 0,2$	$\pm 0,5$	± 1
Over 30 up to 120	$\pm 0,15$	$\pm 0,3$	$\pm 0,8$	$\pm 1,5$
Over 120 up to 400	$\pm 0,2$	$\pm 0,5$	$\pm 1,2$	$\pm 2,5$
Over 400 up to 1000	$\pm 0,3$	$\pm 0,8$	± 2	± 4
Over 1000 up to 2000	$\pm 0,5$	$\pm 1,2$	± 3	± 6
Over 2000 up to 4000	-	± 2	± 4	± 8



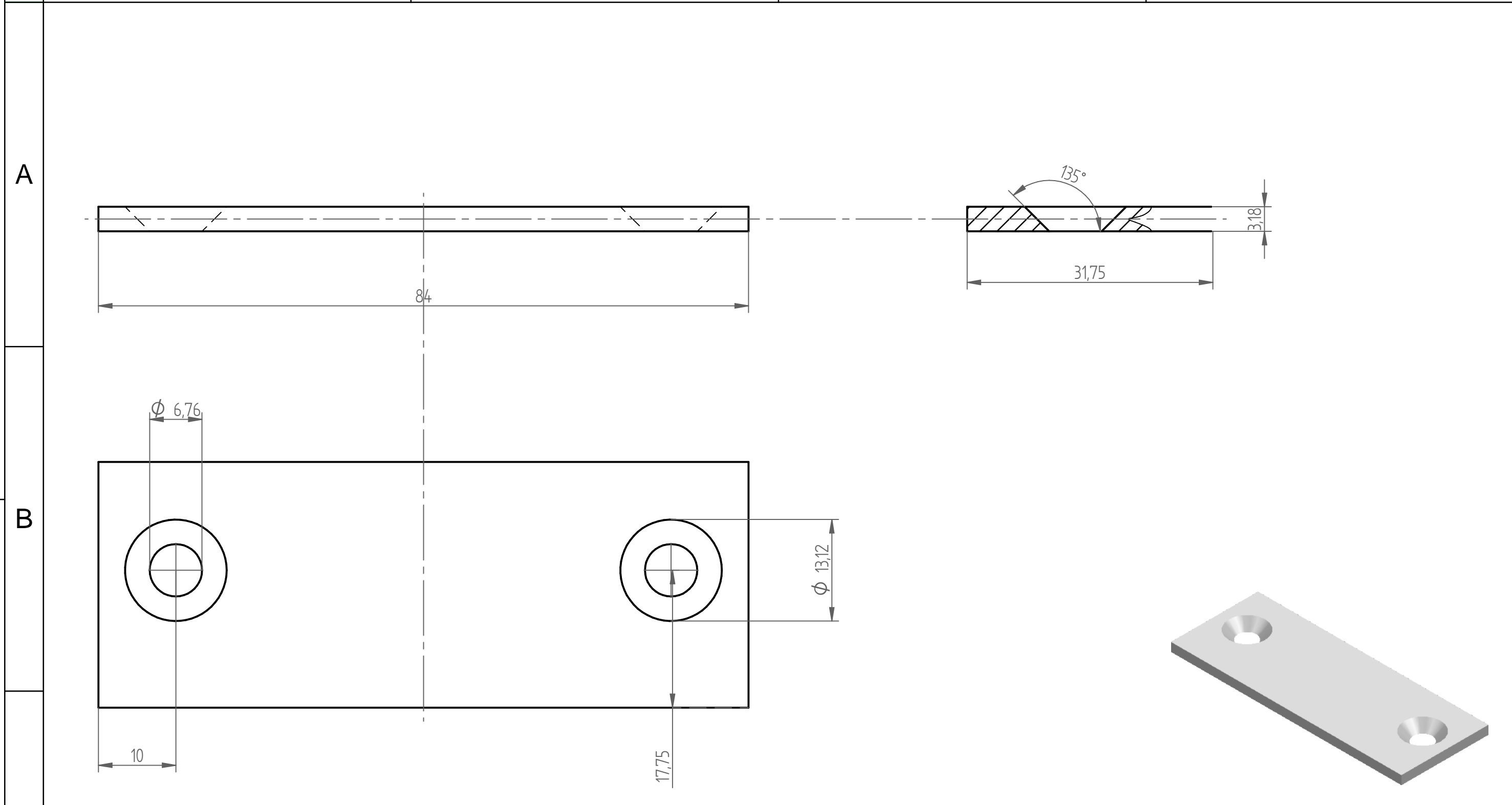
FUA	DRAWN BY	CHECKED BY	APPROVED BY	FACULTY:	INGENIERIAS
NAME	OFID MURCIA	EDGAR CHALA	EDGAR CHALA	PROGRAM:	INGENIERIA MECANICA
DATE				COURSE:	TRABAJO DE GRADO
SIGN				REMOVE SHARP EDGES AND BURRS	SYSTEM
MATERIAL:	AISI 1045	TREATMENT:		DO NOT MEASURE ON THE DRAWING	ISO A
SCALE:	1:1	DIMENSIONS IN:	mm	SURFACE FINISH:	120
QUANTITY:	1	SHEET NO.:	3	PLAN CODE:	
		TOTAL SHEETS:	5	SOPORTE INFERIOR	

SOLID EDGE ACADEMIC COPY



PERMISSIBLE DEVIATION - ISO 2768 - m									FACULTY: INGENIERIAS			
mm	fine (f)	medium (m)	coarse (c)	very coarse (v)	PROGRAM: INGENIERIA MECANICA				COURSE: TRABAJO DE GRADO			
Over 0,5 up to 3	±0,05	±0,1	±0,2	-	FUJA: OFID MURCIA NAME: OFID MURCIA DATE:	DRAWN BY: EDGAR CHALA CHECKED BY: EDGAR CHALA SIGN:	APPROVED BY: EDGAR CHALA APPROVED BY: EDGAR CHALA APPROVED BY: EDGAR CHALA	REMOVE SHARP EDGES AND BURRS DO NOT MEASURE ON THE DRAWING	SYSTEM: ISO A	TREATMENT:	SURFACE FINISH: 120	
Over 3 up to 6	±0,05	±0,1	±0,3	±0,5	MATERIAL: AISI 1045		DESCRIPTION: RETENEDOR CUCHILLA		PLAN CODE:			
Over 6 up to 30	±0,1	±0,2	±0,5	±1	SCALE: 5:1	DIMENSIONS IN: mm		QUANTITY: 1		SHEET NO.: 4 TOTAL SHEETS: 8		
Over 30 up to 120	±0,15	±0,3	±0,8	±1,15	SCALE: 5:1		DIMENSIONS IN: mm		QUANTITY: 1		SHEET NO.: 4 TOTAL SHEETS: 8	
Over 120 up to 400	±0,2	±0,5	±1,2	±2,5	SCALE: 5:1		DIMENSIONS IN: mm		QUANTITY: 1		SHEET NO.: 4 TOTAL SHEETS: 8	
Over 400 up to 1000	±0,3	±0,8	±2	±4	SCALE: 5:1		DIMENSIONS IN: mm		QUANTITY: 1		SHEET NO.: 4 TOTAL SHEETS: 8	
Over 1000 up to 2000	±0,5	±1,2	±3	±6	SCALE: 5:1		DIMENSIONS IN: mm		QUANTITY: 1		SHEET NO.: 4 TOTAL SHEETS: 8	
Over 2000 up to 4000	-	±2	±4	±8	SCALE: 5:1		DIMENSIONS IN: mm		QUANTITY: 1		SHEET NO.: 4 TOTAL SHEETS: 8	

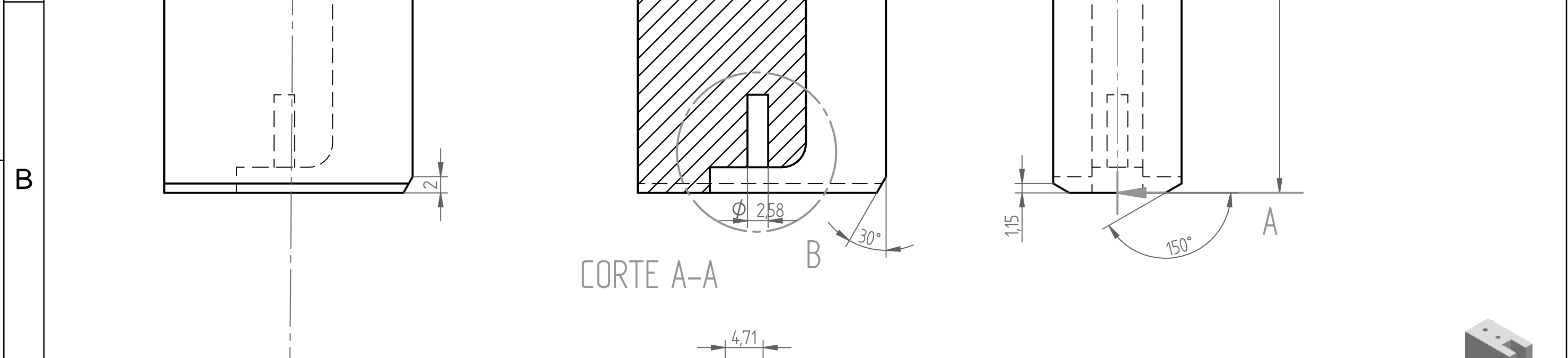
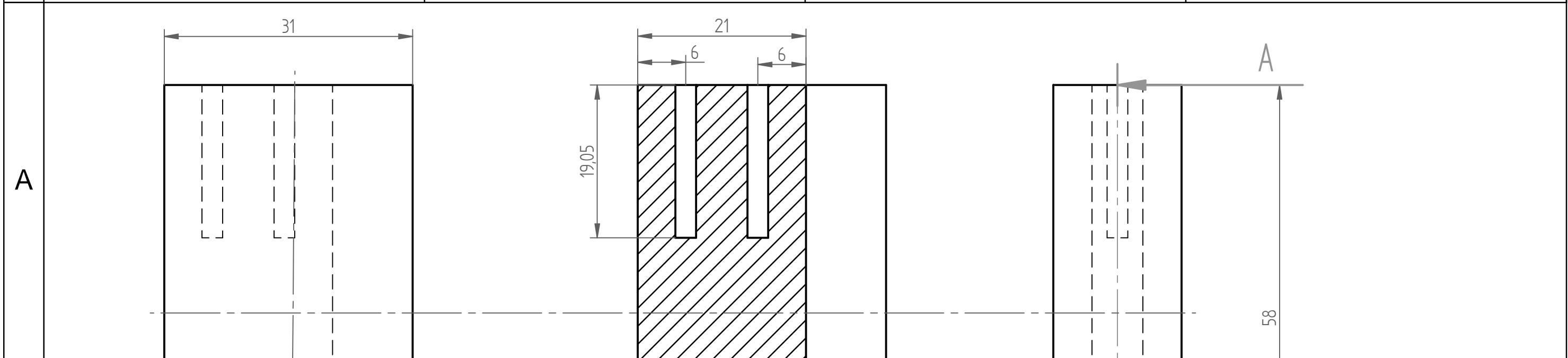
SOLID EDGE ACADEMIC COPY



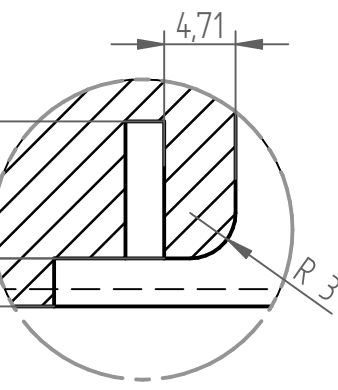
PERMISSIBLE DEVIATION - ISO 2768 - m					Universidad de América <small>Código SMS 1715</small>				FACULTY: INGENIERIAS	
mm	fine (f)	medium (m)	coarse (c)	very coarse (v)					PROGRAM: INGENIERIA MECANICA	
Over 0,5 up to 3	±0,05	±0,1	±0,2	-	COURSE: TRABAJO DE GRADO		REMOVE SHARP EDGES AND BURRS		SYSTEM: ISO A	
Over 3 up to 6	±0,05	±0,1	±0,3	±0,5	FUA: _____ NAME: OFID MURCIA DATE: _____ SIGN: _____	DRAWN BY: _____ CHECKED BY: EDGAR CHALA APPROVED BY: EDGAR CHALA	SURFACE FINISH: 120			
Over 6 up to 30	±0,1	±0,2	±0,5	±1	MATERIAL: AISI 1045		TREATMENT: _____			
Over 30 up to 120	±0,15	±0,3	±0,8	±1,15	SCALE: 2:1	DIMENSIONS IN: mm	DESCRIPTION: PLATINA SOPORTE PROBETA		PLAN CODE: _____	
Over 120 up to 400	±0,2	±0,5	±1,2	±2,5	QUANTITY: 1	SHEET NO.: 5	TOTAL SHEETS: 8			
Over 400 up to 1000	±0,3	±0,8	±2	±4						
Over 1000 up to 2000	±0,5	±1,2	±3	±6						
Over 2000 up to 4000	-	±2	±4	±8						

SOLID EDGE ACADEMIC COPY

A3 1 2 3 4



CORTE A-A

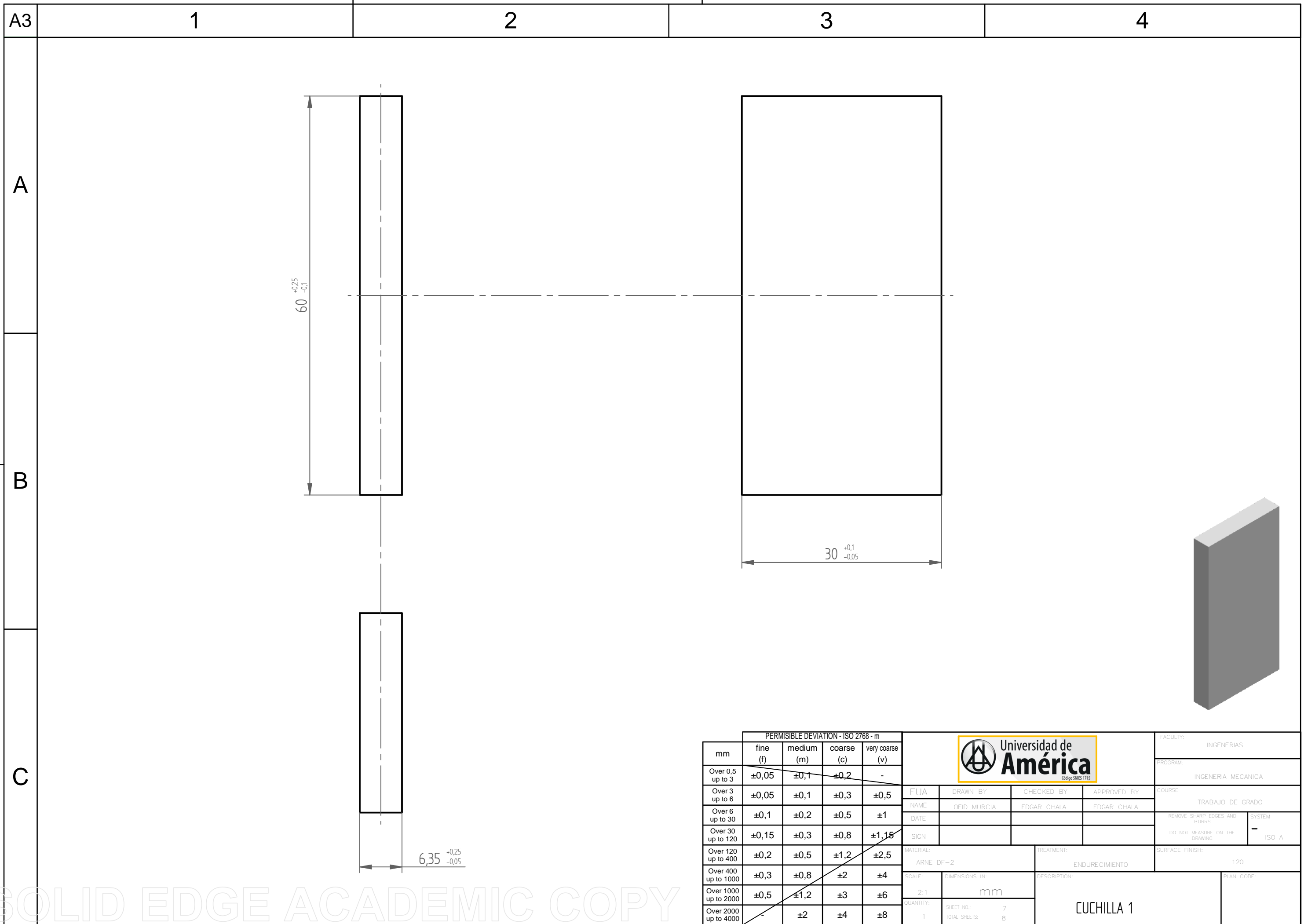


DETALLE B



C		<p>PERMISSIBLE DEVIATION - ISO 2768 - m</p> <table border="1"> <thead> <tr> <th>mm</th> <th>fine (f)</th> <th>medium (m)</th> <th>coarse (c)</th> <th>very coarse (v)</th> </tr> </thead> <tbody> <tr> <td>Over 0,5 up to 3</td> <td>±0,05</td> <td>±0,1</td> <td>±0,2</td> <td>-</td> </tr> <tr> <td>Over 3 up to 6</td> <td>±0,05</td> <td>±0,1</td> <td>±0,3</td> <td>±0,5</td> </tr> <tr> <td>Over 6 up to 30</td> <td>±0,1</td> <td>±0,2</td> <td>±0,5</td> <td>±1</td> </tr> <tr> <td>Over 30 up to 120</td> <td>±0,15</td> <td>±0,3</td> <td>±0,8</td> <td>±1,15</td> </tr> <tr> <td>Over 120 up to 400</td> <td>±0,2</td> <td>±0,5</td> <td>±1,2</td> <td>±2,5</td> </tr> <tr> <td>Over 400 up to 1000</td> <td>±0,3</td> <td>±0,8</td> <td>±2</td> <td>±4</td> </tr> <tr> <td>Over 1000 up to 2000</td> <td>±0,5</td> <td>±1,2</td> <td>±3</td> <td>±6</td> </tr> <tr> <td>Over 2000 up to 4000</td> <td>-</td> <td>±2</td> <td>±4</td> <td>±8</td> </tr> </tbody> </table>					mm	fine (f)	medium (m)	coarse (c)	very coarse (v)	Over 0,5 up to 3	±0,05	±0,1	±0,2	-	Over 3 up to 6	±0,05	±0,1	±0,3	±0,5	Over 6 up to 30	±0,1	±0,2	±0,5	±1	Over 30 up to 120	±0,15	±0,3	±0,8	±1,15	Over 120 up to 400	±0,2	±0,5	±1,2	±2,5	Over 400 up to 1000	±0,3	±0,8	±2	±4	Over 1000 up to 2000	±0,5	±1,2	±3	±6	Over 2000 up to 4000	-	±2	±4	±8					FACULTY: INGENIERIAS PROGRAM: INGENIERIA MECANICA COURSE: TRABAJO DE GRADO	
		mm	fine (f)	medium (m)	coarse (c)	very coarse (v)																																																			
		Over 0,5 up to 3	±0,05	±0,1	±0,2	-																																																			
		Over 3 up to 6	±0,05	±0,1	±0,3	±0,5																																																			
		Over 6 up to 30	±0,1	±0,2	±0,5	±1																																																			
		Over 30 up to 120	±0,15	±0,3	±0,8	±1,15																																																			
		Over 120 up to 400	±0,2	±0,5	±1,2	±2,5																																																			
		Over 400 up to 1000	±0,3	±0,8	±2	±4																																																			
		Over 1000 up to 2000	±0,5	±1,2	±3	±6																																																			
		Over 2000 up to 4000	-	±2	±4	±8																																																			
FUA: _____ NAME: OFID MURCIA		DRAWN BY: _____ CHECKED BY: EDGAR CHALA		APPROVED BY: EDGAR CHALA		REMOVE SHARP EDGES AND BURRS DO NOT MEASURE ON THE DRAWING		SYSTEM: ISO A																																																	
DATE: _____ SIGN: _____		MATERIAL: AISI 1045		TREATMENT: _____		SURFACE FINISH: 120		PLAN CODE: _____																																																	
SCALE: 2:1 DIMENSIONS IN: mm		QUANTITY: 1		SHEET NO.: 6 TOTAL SHEETS: 8		DESCRIPTION: GUIA		_____																																																	

SOLID EDGE ACADEMIC COPY

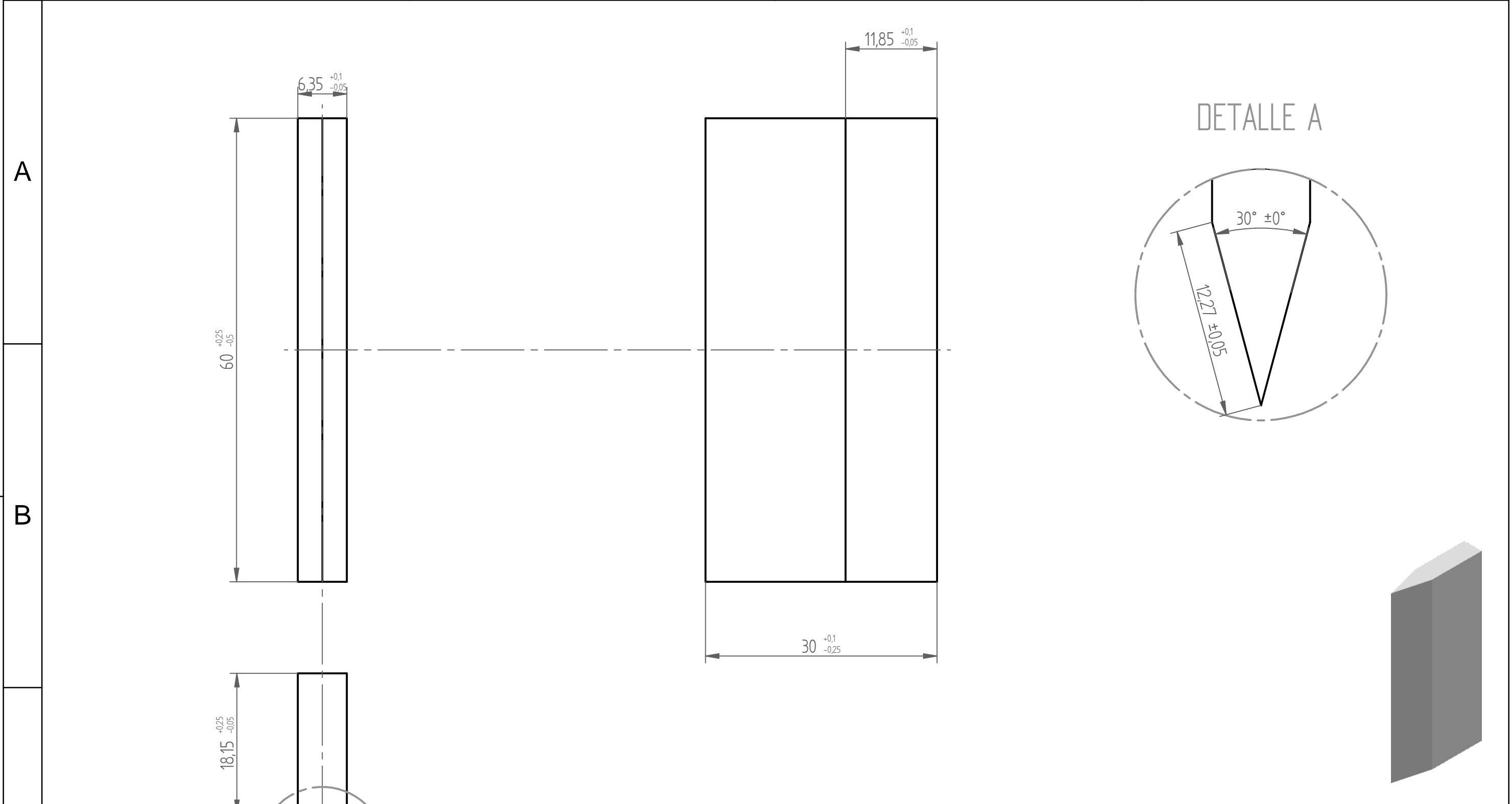



PERMISSIBLE DEVIATION - ISO 2768 - m				
mm	fine (f)	medium (m)	coarse (c)	very coarse (v)
Over 0,5 up to 3	±0,05	±0,1	±0,2	-
Over 3 up to 6	±0,05	±0,1	±0,3	±0,5
Over 6 up to 30	±0,1	±0,2	±0,5	±1
Over 30 up to 120	±0,15	±0,3	±0,8	±1,15
Over 120 up to 400	±0,2	±0,5	±1,2	±2,5
Over 400 up to 1000	±0,3	±0,8	±2	±4
Over 1000 up to 2000	±0,5	±1,2	±3	±6
Over 2000 up to 4000	-	±2	±4	±8



FUA				FACULTY: INGENIERIAS	
DRAWN BY: OFID MURCIA				PROGRAM: INGENIERIA MECANICA	
CHECKED BY: EDGAR CHALA				COURSE: TRABAJO DE GRADO	
APPROVED BY: EDGAR CHALA				REMOVE SHARP EDGES AND BURRS	
DATE:				DO NOT MEASURE ON THE DRAWING	
SIGN:				SYSTEM: ISO A	
MATERIAL: ARNE DF-2			TREATMENT: ENDURECIMIENTO		SURFACE FINISH: 120
SCALE: 2:1		DIMENSIONS IN: mm		DESCRIPTION: CUCHILLA 1	
QUANTITY: 1		SHEET NO.: 7		TOTAL SHEETS: 8	

SOLID EDGE ACADEMIC COPY



PERMISSIBLE DEVIATION - ISO 2768 - m									FACULTY: INGENIERIAS	
mm	fine (f)	medium (m)	coarse (c)	very coarse (v)	PROGRAM: INGENIERIA MECANICA		COURSE: TRABAJO DE GRADO		REMOVE SHARP EDGES AND BURRS	
Over 0,5 up to 3	±0,05	±0,1	±0,2	-	NAME	OFID MURCIA	EDGAR CHALA	EDGAR CHALA	DO NOT MEASURE ON THE DRAWING	
Over 3 up to 6	±0,05	±0,1	±0,3	±0,5	DATE				SYSTEM: ISO A	
Over 6 up to 30	±0,1	±0,2	±0,5	±1	SIGN				SURFACE FINISH: 120	
Over 30 up to 120	±0,15	±0,3	±0,8	±1,15	MATERIAL: ARNE DF-2		TREATMENT: ENDURECIMIENTO		PLAN CODE:	
Over 120 up to 400	±0,2	±0,5	±1,2	±2,5	SCALE: 2:1	DIMENSIONS IN: mm		DESCRIPTION: CUCHILLA 2		
Over 400 up to 1000	±0,3	±0,8	±2	±4	QUANTITY: 1	SHEET NO.: 8	TOTAL SHEETS: 8			
Over 1000 up to 2000	±0,5	±1,2	±3	±6						
Over 2000 up to 4000	-	±2	±4	±8						